

Software User Manual
Version 1.0.0



29-05-2006

Abstract

This is the Software User Manual (SUM) for the bICEPS project. This project is a part of the course Software Engineering (2IP40) at the Eindhoven University of Technology. The document conforms to the SUM guidelines of the software engineering standard, as stated by the European Space Agency (ESA).

This document describes the functionality of the software and instructs on how to use the software correctly.

Contents

Abstract	II
Document Status Sheet	V
Document Change Records	VI
1 Introduction	1
1.1 Intended readership	1
1.2 Applicability	1
1.3 Purpose	1
1.4 How to use this document	1
1.5 Related documents	1
1.6 Conventions	1
1.7 Problem reporting	1
2 Overview	2
2.1 Overview of the software	2
2.2 Administrator tasks	2
2.3 End-User tasks	2
3 Installation	3
3.1 Installation	3
3.2 Uninstallation	5
4 Tutorials	6
4.1 End-User tutorials	6
4.1.1 Registering as a new user	6
4.1.2 Logging in as end-user	7
4.1.3 Changing your password	8
4.1.4 Session creation and sample evaluation	9
4.1.5 Opening, closing, deleting and exporting sessions	12
4.1.6 Generating graphs and PCA mappings	13
4.1.7 Generating closed session overviews	15
4.1.8 Importing protected data	17
4.1.9 Managing custom attributes	17
4.1.10 Creating custom attribute lists	19
4.1.11 Editing and deleting custom attribute lists	20
4.2 Administrator tutorials	21
4.2.1 Logging in as administrator	21
4.2.2 Managing protected attributes	22
4.2.3 Creating protected attribute lists	24
4.2.4 Editing and deleting protected attribute lists	25
4.2.5 Managing the list of physical attributes	26
4.2.6 Exporting protected data	27

5	References	28
5.1	End-user reference	28
5.1.1	Login screen	28
5.1.2	Registration screen	29
5.1.3	ICEPS main screen	30
5.1.4	Change password screen	33
5.1.5	Open session screen	34
5.1.6	Show Log screen	35
5.1.7	Create new session screen	36
5.1.8	Session screen	37
5.1.9	Sample evaluation screen	38
5.1.10	Sample overview screen	40
5.1.11	Custom attribute list screen	42
5.1.12	Open custom attribute list screen	44
5.1.13	Manage custom attributes screen	44
5.1.14	Add new custom attribute screen	46
5.1.15	PCA mapping options screen	46
5.1.16	PCA mapping screen	47
5.1.17	Graph options screen	50
5.1.18	Graph screen	51
5.1.19	Database operations screen	53
5.1.20	Closed sessions overview screen	54
5.1.21	Autosave	55
5.2	Administrator reference	55
5.2.1	Login screen	55
5.2.2	ICEPS main administration screen	55
5.2.3	Change password screen	57
5.2.4	Protected attribute list screen	57
5.2.5	Open protected attribute list screen	59
5.2.6	Manage protected attributes screen	59
5.2.7	Manage physics attribute list screen	60
5.2.8	Add new protected attribute screen	61
A	Glossary	63

Document Status Sheet

Algemeen

Document Titel: Software User Manual
Identification: /documenten/SUM/SUM-1.0.0.pdf
Authors: Kevin Jonkers & Marcel Steine
Document Status: Internally approved

Document History

Version	Date	Reason of Change
0.1.0	22-05-2006	Initial Version
1.0.0	29-05-2006	Changes after internal review

Document Change Records

Overview

DCR number: 1
Date: 29-05-2006
Authors: Kevin Jonkers & Marcel Steine
Approved: Internally Approved
Document Titel: Software User Manual
Identification: /documenten/SUM/SUM-1.0.0.pdf

Changes

Page	Paragraph	Reason of Change
All	All	References to SAS removed
6	4.1.1	Only password is case-sensitive
8	4.1.3	"Empty string", bad term for "normal" people
17	4.1.8	Fixed a gramatical error
23	4.2.3	Fixed a gramatical error
29	5.1.2	Fixed a gramatical error
40	5.1.9	Fixed a layout bug
56, 57	5.2.2	Fixed a layout bug
55	5.1.21	Added autosave section

Chapter 1

Introduction

1.1 Intended readership

This document is intended for end users and administrators of the ICEPS system. Both roles are formally described in [URD]. The reader is expected to have basic knowledge of the Microsoft Windows operating system.

1.2 Applicability

This document applies to the ICEPS system, version 1.0.0.

1.3 Purpose

The purpose of this document is to assist the user in learning the ICEPS system and to serve as a reference when using the ICEPS system.

1.4 How to use this document

First-time users are encouraged to read chapter 4 and follow each tutorial to develop a basic understanding of ICEPS.

More experienced users can use the reference in chapter 5 to find out more about specific features of ICEPS.

1.5 Related documents

[URD] **User Requirements Document**
bICEPS
Mohammed El Kebir, Hans Wauters, Kevin Verbeek, Johan de Jong
Technische Universiteit Eindhoven, 2005 / 2006

1.6 Conventions

User	Any user using the system, this is either an End-User or an Administrator
End-User	The end users using the system
Administrator	The administrator using the system
<i>Italics</i>	All words in italics are texts on on-screen items

1.7 Problem reporting

Since the bICEPS team will be dissolved after completion of the ICEPS project, the issue of problem reporting is left to Sara Lee/DE.

Chapter 2

Overview

2.1 Overview of the software

ICEPS is a system for evaluating the quality of coffee samples by means of a certain attribute list. The results of these evaluations can then be exported to Microsoft Excel or be viewed in a graph or PCA-mapping.

2.2 Administrator tasks

An ICEPS administrator can create, change and delete protected attributes and protected attribute lists. The collection of attributes and attribute lists can be exported to a file for distribution to end-users. The administrator can also manage the list of physical attributes on which a sample is rated.

2.3 End-User tasks

An ICEPS end-user can create, change and delete custom attributes and custom attribute lists. These attributes and lists are only available for the end-user who created them. It is also possible to import a file with protected attributes and protected attribute lists, which can then be used for evaluating a sample.

The end-user can also generate Microsoft Excel files containing the evaluations of samples, or generate graphs and PCA-mappings of the evaluations. For all evaluated samples, various overviews can be generated and viewed.

Chapter 3

Installation

This chapter describes how ICEPS can be installed and uninstalled on your system. Please note that only installation is discussed in this chapter. For more information on how to import an initial set of protected data, please see the tutorial or reference section of this document.

3.1 Installation

To begin the installation of ICEPS, double click on the executable named ICEPSsetup.exe. You should now see the screen as shown in figure 3.1. During the installation you can always go one step back by clicking the *Back* button.

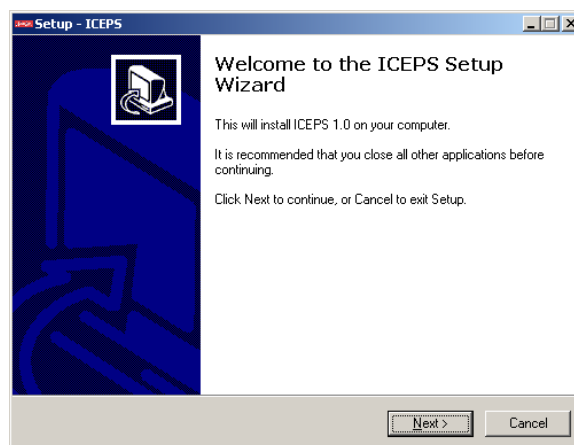


Figure 3.1: ICEPS installation screen

Click *Next* to proceed, and the screen show in figure 3.2 will appear. This screen shows the location where ICEPS will be installed (C:\ICEPS by default). If you would like to change the installation folder, click on the *Browse* button and choose a new location.

When the displayed destination folder is ok, click the button *Next* to proceed.

Now the screen shown in figure 3.3 will appear. Here you can choose the location for your start menu shortcuts. Click *Browse* to change the destination, by default it is ICEPS.

If you don't want the installer to create a folder in your start menu, check the check box labeled *Don't create a Start Menu folder*.

Now click *Next* to proceed to the next step.

The additional tasks screen will appear (figure 3.4). If you want either a desktop icon or quick launch icon, check the appropriate check box(es). Finally click *Next* to proceed.

You will now see the overview screen, as shown in figure 3.5. Check if all the information is correct. If so, click *Install* to start copying the ICEPS files. If not, click *Back* to go back to previous steps.

When the installation completes you will see the screen shown in figure 3.6. If you click *Finish* the installer will close and ICEPS will launch.

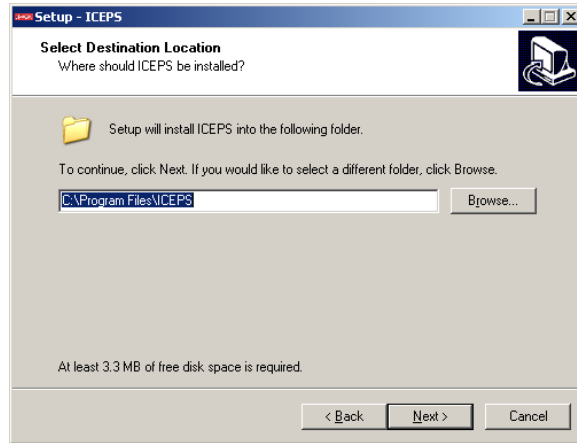


Figure 3.2: ICEPS installation destination screen

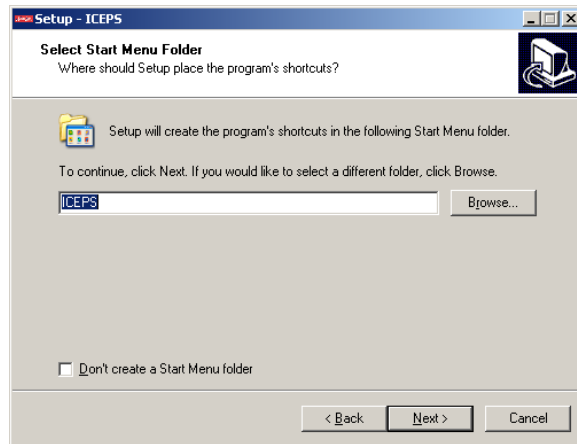


Figure 3.3: ICEPS installation shortcuts screen

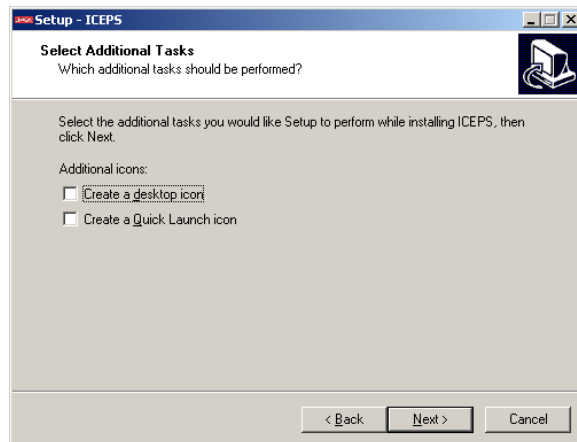


Figure 3.4: ICEPS installation additional tasks screen

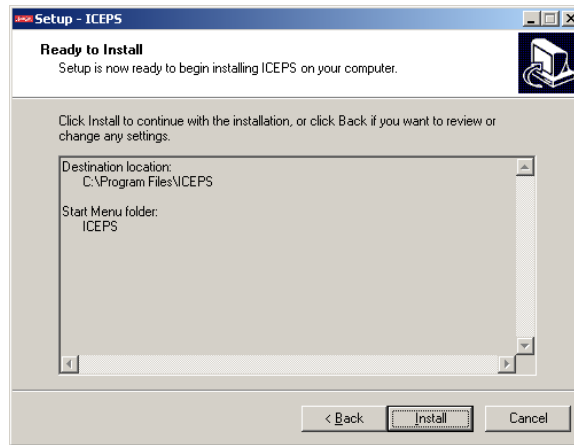


Figure 3.5: ICEPS installation overview screen

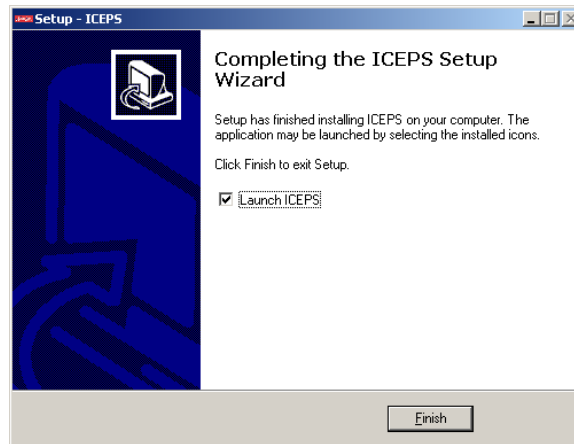


Figure 3.6: ICEPS installation final screen

3.2 Uninstallation

To uninstall ICEPS, locate the shortcut *Uninstall ICEPS* in your ICEPS start menu folder (if you did not create a start menu folder during installation, please use the Add/Remove Programs screen in Windows). Click this shortcut to start the uninstall program.

Click *Yes* to uninstall ICEPS, if everything went right, a dialog will appear, telling ICEPS was uninstalled successfully.

Chapter 4

Tutorials

4.1 End-User tutorials

4.1.1 Registering as a new user

Functional description

This tutorial describes how to register yourself as a new user in ICEPS.

Cautions and warnings

The password is case-sensitive.

Procedure

Before you start, please be sure to know:

- Your employee number
- A password (optional)

Start ICEPS, the screen as shown in figure 4.1 will show up.



Figure 4.1: Login screen

Since you want to register, click on the button labeled *Register new user*. This will bring up the screen as shown in figure 4.2.

Now please enter the following things:

- For *Name*, enter your real name
- For *Username*, enter your employee number
- For *Password*, enter a password (this is optional)



Figure 4.2: Registration screen

- If you have entered anything in the previous step, enter the same password for *Confirm Password*. If you have left *Password* empty, do not fill in anything for *Confirm Password*.

Finally, click on the button labeled *Register*. You are now registered as an end-user for ICEPS and can login (section 4.1.2).

Likely errors

- If the values entered in *Password* and *Confirm Password* are not the same, a messagebox will show up, saying that the passwords do not match. You should clear the password fields and enter the password again.

4.1.2 Logging in as end-user

Functional description

This tutorial describes how to login as an end-user in ICEPS.

Cautions and warnings

Be sure to be a registered user in the system (see section 4.1.1).

Procedure

Before you start, please be sure to know:

- Your employee number
- Your password (if you supplied one during registration)

Start ICEPS, the screen as shown in figure 4.1 will show.

Now enter the following information:

- For *Username* enter your employee number
- For *Password* enter the password you supplied during registration. If you did not supply a password during registration, leave this field empty.

Now click on *Login* and the ICEPS main form will show, see figure 4.3.

Likely errors

- If the password you supplied is not correct for the given username, a messagebox will show up, saying that the password is incorrect. Please re-enter your password and click *Login* again to retry to login.

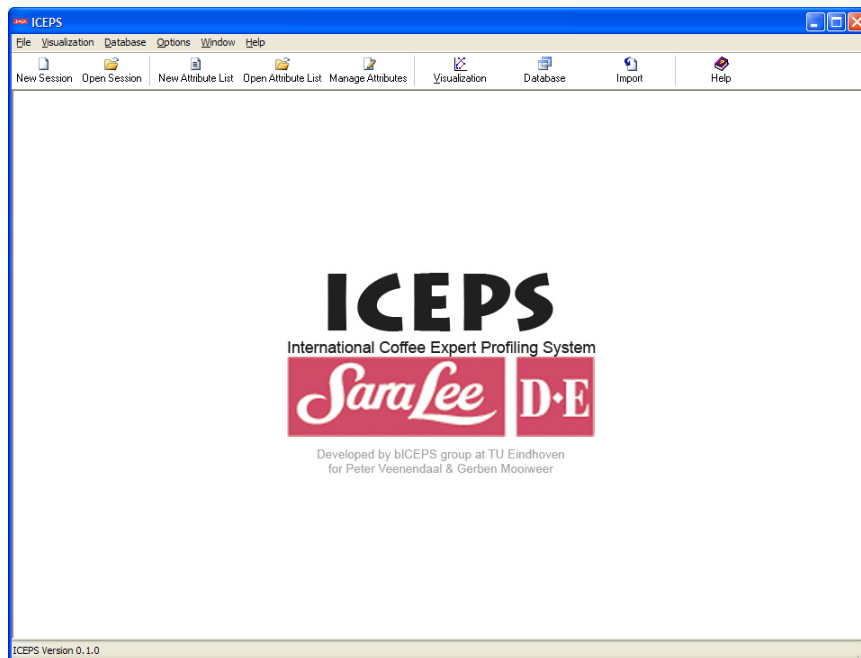


Figure 4.3: ICEPS main screen

4.1.3 Changing your password

Functional description

This tutorial describes how to change the password you use for logging in to ICEPS.

Cautions and warnings

You have to be logged in to follow this tutorial.

Remember your new password, as there is now way to retrieve it if you forget it.

Procedure

In the ICEPS mainscreen select *Options* -> *Change Password* from the menu. The change password screen will appear, as shown in figure 4.4.

Figure 4.4: Change password screen

In the *Old password* field, fill in your current password (leave empty if you do not have a password set). In the *New password* and *Confirm password* fields, enter your new desired password (leave empty if you want to use no password). Make sure you type the same password in both fields. Now click *Ok*

to confirm the change. When you start ICEPS the next time, you will have to login with your new password.

Likely errors

- If you receive the error "The supplied passwords do not match", the passwords filled in in the *New password* and *Confirm password* fields are not the same. Re-enter your password and click *Ok* to try again.

4.1.4 Session creation and sample evaluation

Functional description

This tutorial describes how to create a session and evaluate samples for this session.

Cautions and warnings

You have to be logged in to follow this tutorial.

The attribute lists seen in screenshots in this tutorial will probably not match the ones seen on the user's screen.

Procedure

In the ICEPS mainscreen click on *New Session* in the toolbar or click on *File -> New Session* in the menu. The screen shown in figure 4.5 will show up.

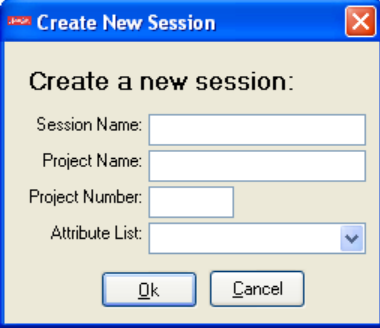


Figure 4.5: New session screen

Enter the following information:

- For *Session Name* enter an identifying name for the session
- For *Project Name* enter the name of the corresponding project (optional)
- For *Project Number* enter the number of the corresponding project (optional)
- For *Attribute List* choose the attribute list you want to use for evaluating the samples in this session

Now click on the button labeled *Ok* and the screen shown in figure 4.6 will appear.

This is the session overview screen. In this screen you will see all relevant information for a session and a list of all samples that have been evaluated in this session. We will now first add a description to the session and save it.

To add a description, enter some text in the *Description* field in the session overview screen. This

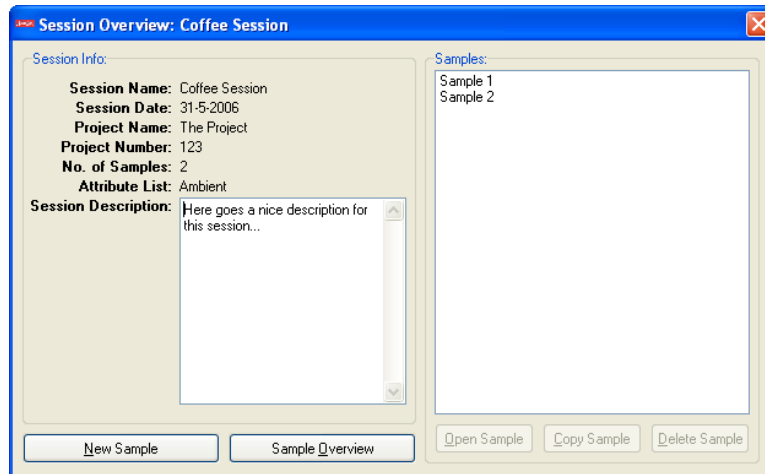


Figure 4.6: Session overview screen

description will be automatically saved.

Now that we have all the relevant session info filled in, we can start a sample evaluation. Click on the button labeled *New Sample*, this will bring up a message box asking for a name for the sample. Fill in an appropriate name and click *Ok*. Now, the sample evaluation screen, shown in figure 4.7, will show up.

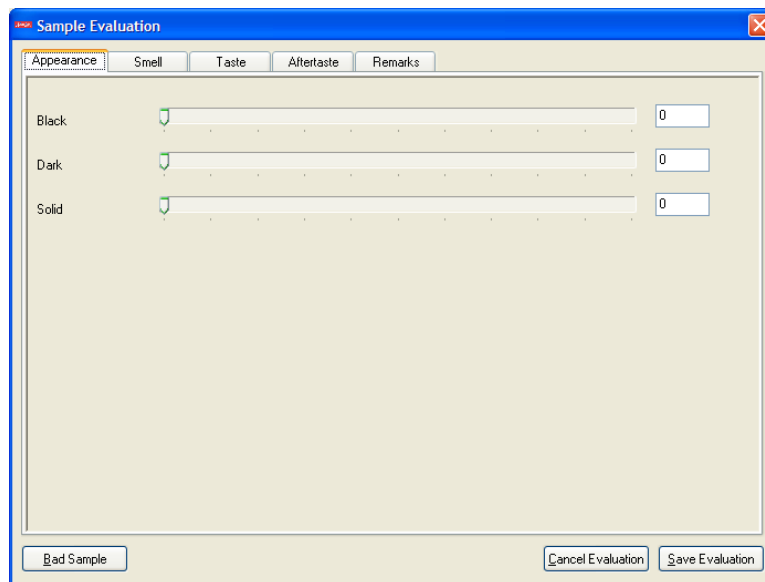


Figure 4.7: Sample evaluation screen

In this screen you can evaluate each attribute. All the attributes are placed on a tab for their category.

Evaluating can be done in two ways:

- You can drag the slider next to an attribute name, the corresponding value will be displayed in

the textfield on the right

- You can directly enter a value in the textfield on the right, the slider will accordingly move to the corresponding position

Now evaluate every attribute on the tabs labelled *Appearance*, *Smell*, *Taste* and *Aftertaste* (one or more of these may be absent if the attribute list does not have any attributes in these categories) and finally select the tab *Remarks*.

Now that you have evaluated all attributes you need to enter a final quality mark for the sample and optionally any remarks. Enter the quality mark in the *Quality Mark* field, this can be number ranging from 0 to 10, with two decimal places. It does not matter if you use a comma or dot as a decimal separator, it will be auto corrected once you leave the field.

Enter you remarks in the *Remarks* field if you have any.

An optional last step is to add physical data for this sample, this can be done on the *Physics* tab (this tab can be absent if no physics attribute list is present). Just enter the appropriate values in the textfields.

To finish the evaluation, click on the button labeled *Save evaluation*. The session overview screen will now contain a sample with the name you just supplied in the list of samples on the right.

If you want an overview of all samples in your session, you can click on the button labeled *Sample Overview* in the session overview screen. This will bring up the screen shown in figure 4.8.

	Sample 1	Sample 2
Appearance		
Smell		
test	16.9	15.95
Taste		
Aftertaste		
Quality mark	9.0	1.0
Physics		

Figure 4.8: Sample overview screen

This shows all samples with their respective scores for each attribute. In this overview you can change the attribute evaluations by double clicking on the desired cell and entering a new value. To save any changes made here, you have to click the *Save Changes* button.

The overview can be printed by clicking the button labeled *Print*. This will bring up a standard Windows print dialog.

For more information on generating graphs from the sample overview screen, see section 4.1.6.

Likely errors

- If you did not evaluate all attributes, or did not enter a quality mark, you will get a warning when clicking *Save Evaluation*. This warning states that the sample will be discarded because not all attributes are evaluated. To save the sample you need to click *Cancel* in this messagebox and evaluate all attributes and give a quality mark.

4.1.5 Opening, closing, deleting and exporting sessions

Functional description

This tutorial describes how previously created sessions can be opened, closed (finalized), deleted and exported to Microsoft Excel files.

Cautions and warnings

You have to be logged in to follow this tutorial.

Please be sure to have one or more open sessions with at least one evaluated sample in your system. Also, note that when you close (finalize) a session, it can never be opened again. Furthermore, deleted sessions cannot be recovered. So please be careful when following this tutorial, not to close or delete sessions on which you still want to work.

Procedure

To do any of the operations mentioned in the functional description, first click on the toolbar button *Open Session* or click on *File -> Open Session* in the menu. This will bring up the open session screen, as shown in figure 4.9.

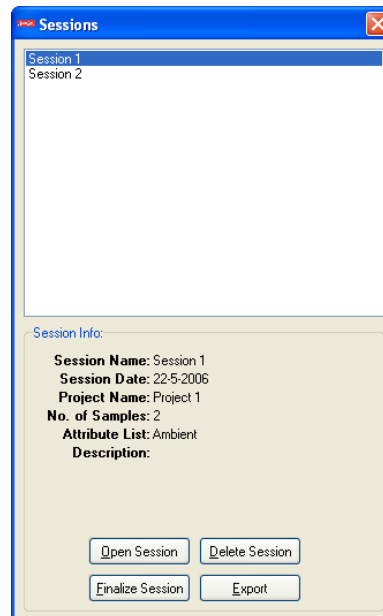


Figure 4.9: Session open screen

When you select a session in the list, all relevant session information will be displayed in the *Session Info* box below the list.

To open a session, click on the desired session in the list and then click on *Open Session*. This will bring up the session overview screen which we discussed earlier.

To delete a session, click on the desired session in the list and then click on *Delete Session*. Now, a messagebox will show up, asking for confirmation. If you click *Yes*, the session will be deleted. Clicking *No* will not delete the session.

To close a session, click on the desired session and then click on *Finalize Session*. Now, a messagebox will show up, asking for confirmation. If you click *Yes*, the session will be closed. Clicking *No* will not close the session.

Yes, the session will be closed. Clicking *No* will not close the session.

To export a session and its sample data, click on the desired session and then click on *Export*. You now have the option to choose between exporting to a Microsoft Excel file or to show the Export Log. The first option will bring up a standard Windows save file dialog. Choose a desired filename here and click *Save* to save the data to a file. The second option will bring up the export log screen. The export log screen shows the export dates of the selected session.

Likely errors

None

4.1.6 Generating graphs and PCA mappings

Functional description

This tutorial describes how to generate graphs and PCA mappings from samples.

Cautions and warnings

You have to be logged in to follow this tutorial.

Please be sure to have some evaluated samples in your system. To compare samples in one graph, the samples need to be evaluated with the same attribute list.

Procedure

Graphs can be generated in two ways:

- Based on all samples in one session, this can be done from the sample overview screen
- Based on arbitrary samples (from different sessions), evaluated with the same attribute list. This can be done from the toolbar or menu.

We will discuss both methods, starting with the first method.

Bring up a sample overview screen and click on the button labeled *Show Graph*. Now the sample data graph screen shows up. We will discuss how this screen works further on in this section.

We will now show how to generate a graph from the toolbar/menu.

To do this, click on the toolbar button labeled *Visualization* and then on *Graph*. Or, alternatively, click on *Visualization -> Graph* in the menu. This brings up the graph options screen, shown in figure 4.10.

In the *Attribute List* dropdown box, you can select for which attribute list you want to compare samples. If you select any attribute list from the dropdown box, the samples, evaluated with this attribute list, will show up, ordered by their containing sessions.

To select the samples you want in your graph, first expand the sessions that contain the desired samples. You can do this by clicking on the plus-sign in front of a session name.

You can now select the desired samples by clicking on the check boxes in front of the sample.

Another option is to select an entire session (and thus all the samples it contains), by clicking on the

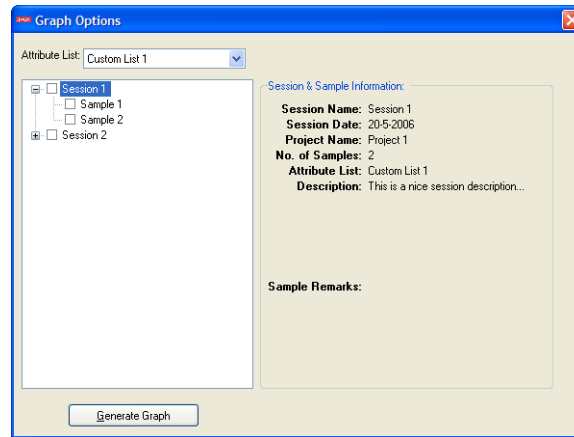


Figure 4.10: Graph options screen

check box in front of a session name.

When you finished selecting samples, click on the button labeled *Generate Graph* to generate the graph.

This will bring up the sample data graph screen, as shown in figure 4.11. In this screen you can influence what is displayed in the graph, print the graph and export the graph as a graphical file.

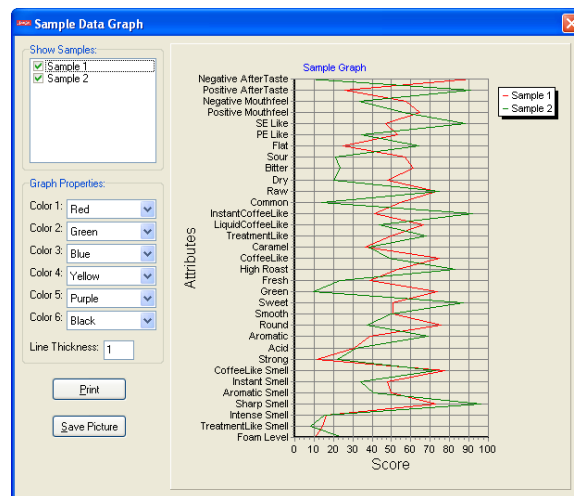


Figure 4.11: Sample data graph screen

To display samples, select them by clicking the check box in front of the desired samples in the list titled *Show Samples*. At most six samples can be displayed at a time.

The colors for each sample line can be changed by changing the values in the dropdown boxes named *Color 1*, *Color 2*, etc. The thickness of graph lines can be changed by entering a positive value for *Line Thickness*.

To print the graph, click on the button labeled *Print*. This brings up a standard Windows print dialog.

To export the graph to a graphical file (.bmp or .jpg), click on the button labeled *Save Picture*. This brings up a standard Windows save file dialog. Enter the desired filename and choose the filetype in the dropdown box below the filename and click on *Save*. Now the graph is exported to a graphical file and can be opened using compatible graphics software.

To generate PCA mappings, click on *Visualization* and then *PCA Mapping* in the toolbar. Or, alternatively, click on *Visualization -> PCA Mapping* in the menu. Now, the PCA mapping options screen will show. This screen is operated the same way as the graph options screen, so we will not discuss it here again.

After clicking on *Generate PCA Mapping*. The PCA mapping screen will appear, as show in figure 4.12.

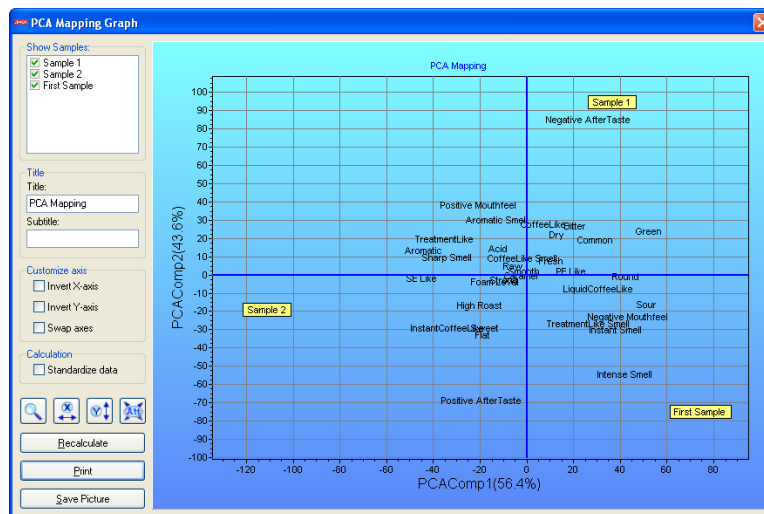


Figure 4.12: PCA mapping screen

The PCA mapping screen offers a lot of functionality which we will not discuss here. For more information see section 5.1.16

Likely errors

- If you try to select more than six samples in the sample data graph screen, the seventh selected sample will not become selected. To display the sample in the graph, deselect one or more other samples first.

4.1.7 Generating closed session overviews

Functional description

This tutorial describes how to generate sample overviews of closed sessions.

Cautions and warnings

You have to be logged in to follow this tutorial.

Please make sure you have closed at least one session before starting this tutorial.

Procedure

Various overviews of sample data from closed sessions can be generated from the database operations

screen.

Click on the toolbarbutton *Database* or click on *Database -> Show Database Operations* in the menu and the database operations screen will show up. On this screen, show in figure 4.13, the various options for generating closed session overviews are shown.

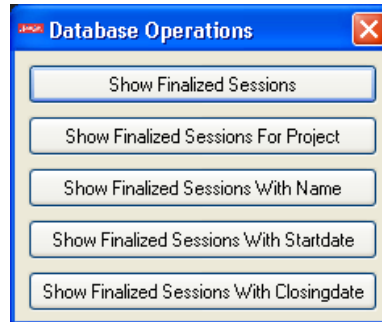


Figure 4.13: Database operations screen

As all the descriptions on the buttons explain themselves, we will not go into detail here. After you clicked one of the buttons (and filled in any requested data), the closed session overview screen will appear. This screen is shown in figure 4.14.

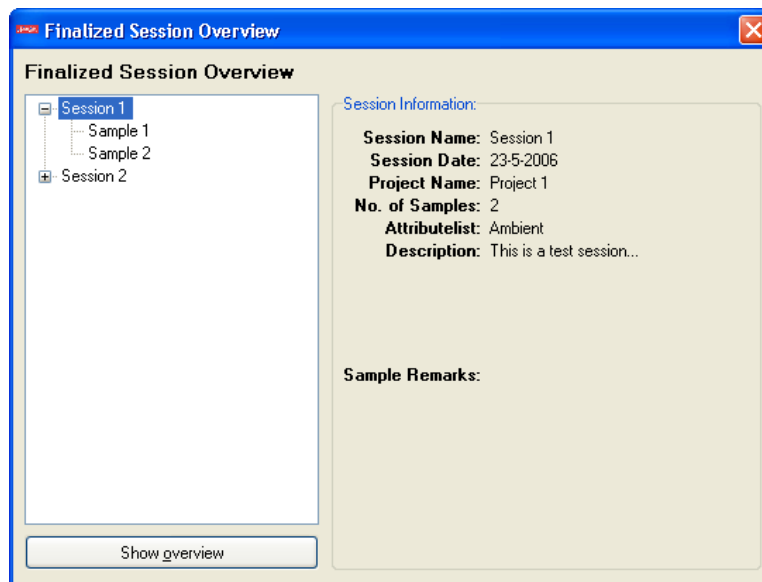


Figure 4.14: Closed session overview screen

To see more information on a session, select the session or one of its samples in the listbox on the left. The session information on the right will be updated accordingly. Samples can be made visible by clicking the plus-sign in front of a session name.

To see more detailed information about the samples in a certain session, double click on the session or anyone of its samples. Now the sample overview screen will appear. We already discussed this screen in section 4.1.4, so look there for more information on how it works. The only difference when

using this screen with a closed session, as opposed to an open session, is that only physical attributes can be changed. The regular attributescores can not be changed anymore.

Likely errors

- If the closed session overview screen does not show any sessions, you probably supplied information (project name, session name, startdate or closingdate) that does not have any related closed sessions.

4.1.8 Importing protected data

Functional description

This tutorial describes how to import protected data that has been exported by an administrator. The protected data is either a file with protected attributes and protected attribute lists, or a file with a list of physical attributes.

Cautions and warnings

You have to be logged in to follow this tutorial.

Once you have imported files, old attribute lists or physical attributes that were previously available but are not in the imported data, cannot be used for new sessions.

Procedure

The steps for importing both types of data are almost the same. Therefore we will only discuss the steps once and indicate where both procedures differ.

To import any data file, first click on the toolbar button labeled *Import* and then choose the desired type of data to import. Another option is to select *Options -> Import Protected Attributes Lists* or *Options -> Import List Of Physical Attributes* from the menu. This is the only step where both procedures differ, so be sure to pick the right option.

After selecting one of the previously mentioned options, a standard Windows file open dialog will appear. Browse for the location of the file you want to import and select it, so its name shows up in the *Filename* field. Then click *Ok*.

The file will now be imported into your local database. All messages generated by the import process will be displayed in a new window. Inspect the messages to see if everything imported fine. You can immediately use the newly imported data for new sessions.

Likely errors

- If the file you selected is corrupt, an errorbox will show up, telling that the file could not be imported. Please be sure to use a valid file exported and distributed by an administrator.
- If the log window shows any errors, they are self explanatory.

4.1.9 Managing custom attributes

Functional description

This tutorial describes how to manage (create and delete) your custom attributes. These custom attributes can later on be used to form a custom attribute list.

Cautions and warnings

You have to be logged in to follow this tutorial.

Please note that once you deleted a custom attribute, it will still be available in previously created custom attribute lists but cannot be used anymore in newly created custom attribute lists.

Procedure

To manage your custom attributes, click on the toolbar button labeled *Manage Attributes* or, alternatively, select *Files -> Manage Attributes* from the menu. This will bring up the manage custom attributes screen, as shown in figure 4.15.

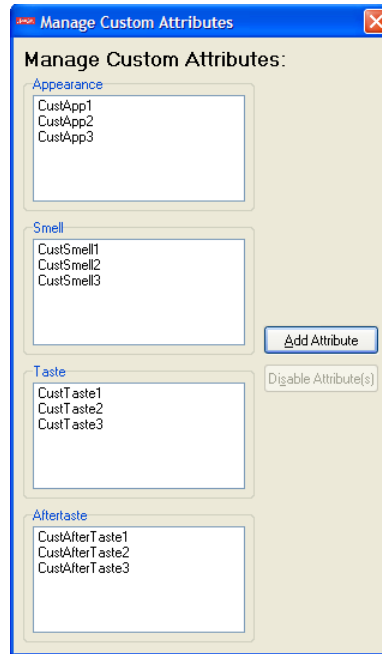


Figure 4.15: Manage custom attributes screen

All custom attributes are displayed in their corresponding category. You are now able to add custom attributes and to disable custom attributes. Disabling an attribute will make it unavailable for use in a newly created custom attribute list. It will still be listed in previously created custom attribute lists though.

To add a new custom attribute, click on the button labeled *Add Attribute*, the add new custom attribute screen will show up, as shown in figure 4.16.



Figure 4.16: Add new custom attribute screen

First, select the desired category for the new custom attribute in the *Category* dropdownlist. Now fill in a name for the new custom attribute in the *Attribute Name* field. Finally, click *Ok* to add the

custom attribute to the list.

To disable a custom attribute, first, select the desired attribute. It is also possible to select more than one attribute at a time: If the attributes you want to select are in the same category, hold ctrl and click on the desired attributes. If the attributes are in different categories you can just click them. A combination of both is possible, too. Finally, to disable the selected custom attribute(s), click on the button labeled *Disable Attributes*. Now, a messagebox will appear, asking for confirmation. Click on *Yes* to confirm the disabling of the custom attributes, or click on *No* to abort the operation.

Likely errors

- While adding a new custom attribute: If you enter an attribute name in the *Attribute Name* field that already exists in the selected category, an error message will show. Please change your attribute name in one that is not yet in use.

4.1.10 Creating custom attribute lists

Functional description

This tutorial describes how to create a new custom attribute list. A custom attribute list can consist of a mix of protected and custom attributes.

Cautions and warnings

You have to be logged in to follow this tutorial.

Procedure

To create a new custom attribute list, click on the toolbarbutton labeled *New Attribute list* or, alternatively, select *File -> New Attribute list* from the menu. This will bring up the create custom attribute list screen as shown in figure 4.17.

The first thing to do, is fill in a name for the new custom attribute list in the *Attribute list Name* field. Please note that if you fill in a name of an already existing list, this list will be overwritten.

Now you can add attributes to the list. On the left are four category-lists, this is your custom attribute list. On the right are two tabs with four category-lists each. To add a protected attribute to your custom attribute list, select the tab labeled *Protected Attributes*. Next, select one or more attributes (multiple attributes can be selected by holding the ctrl key and clicking), and click the button labeled *Add*. The selected attributes will now move to your custom attribute list. An alternative way to add attributes is to select one or more attributes in one category and drag them to the same category in your custom attribute list on the left.

To add a custom attribute to your custom attribute list, select the tab labeled *Custom Attributes*. Next, follow the same steps as above.

To remove an attribute from your custom attribute list, select one or more attributes in the lists on the left and click the button labeled *Remove*. The selected attributes will now move back to the right.

To finish creating your custom attribute list, click on the button labeled *Save List*. The list will now be saved and available for use in newly created sessions.

Likely errors

- If the name supplied in the *Attribute List Name* field already exists for another custom attribute list, upon saving, a warning message will appear. If you click *Yes*, the previous version of the attribute list with this name will be overwritten.

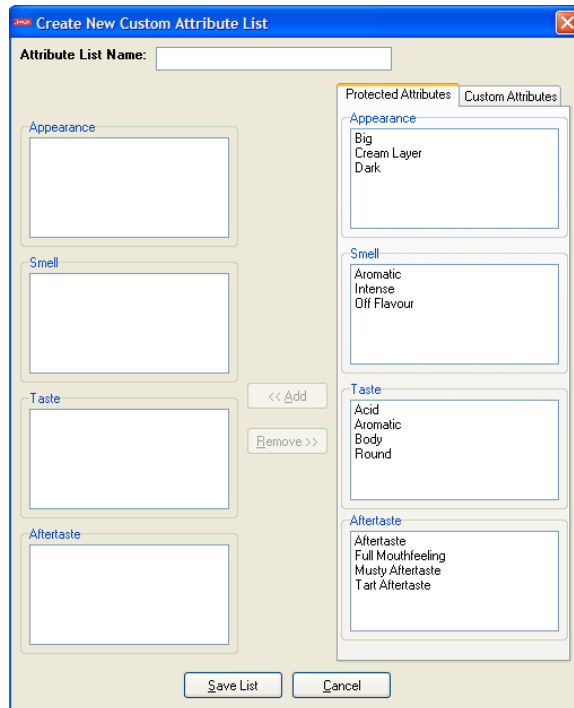


Figure 4.17: Create custom attribute list screen

4.1.11 Editing and deleting custom attribute lists

Functional description

This tutorial describes how to edit or delete any of your custom attribute lists.

Cautions and warnings

You have to be logged in to follow this tutorial.

Please note that once you delete a custom attribute list, it will still be available in previously created sessions (which are using that custom attribute list). Also, when you edit a custom attribute list, the old version will still be used in previously created sessions (which are using that custom attribute list).

Procedure

To edit or delete a custom attribute list, first click on the toolbar button labeled *Open Attribute list*, or, alternatively, select *File->Open Attribute list* from the menu. Now the custom attribute lists screen will appear, as shown in figure 4.18.

To edit a custom attribute list, select a name in the list and click the button labeled *Change List*. Now the change custom attribute list screen will appear, and you can edit your list as described in 4.1.10.

To delete a custom attribute list, select a name in the list and click the button labeled *Disable List*. Now a messagebox asking for confirmation will show up. Click *Yes* to disable the list, or click *No* to abort the operation. If you clicked *Yes* the custom attribute list will now disappear from the list, otherwise, nothing happens.

Likely errors

None

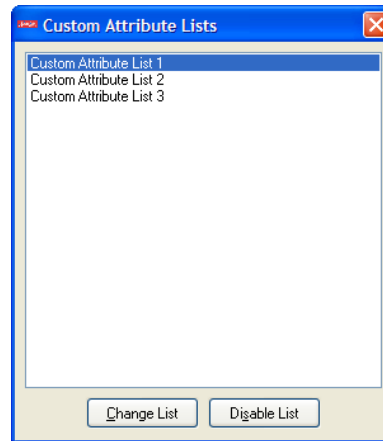


Figure 4.18: Custom attribute lists screen

4.2 Administrator tutorials

4.2.1 Logging in as administrator

Functional description

This tutorial describes how to login as an administrator.

Cautions and warnings

Please be sure to have an administrator password supplied to you.
An administrator will always have a non-empty password.

Procedure

Start ICEPS, the screen as shown in figure 4.19 will show.



Figure 4.19: Login screen

Now enter the following information:

- For *Username* enter "admin" (without the quotes).
- For *Password* enter the password that was supplied to you.

Now click on *Login* and the ICEPS main administration form will show, see figure 4.20.

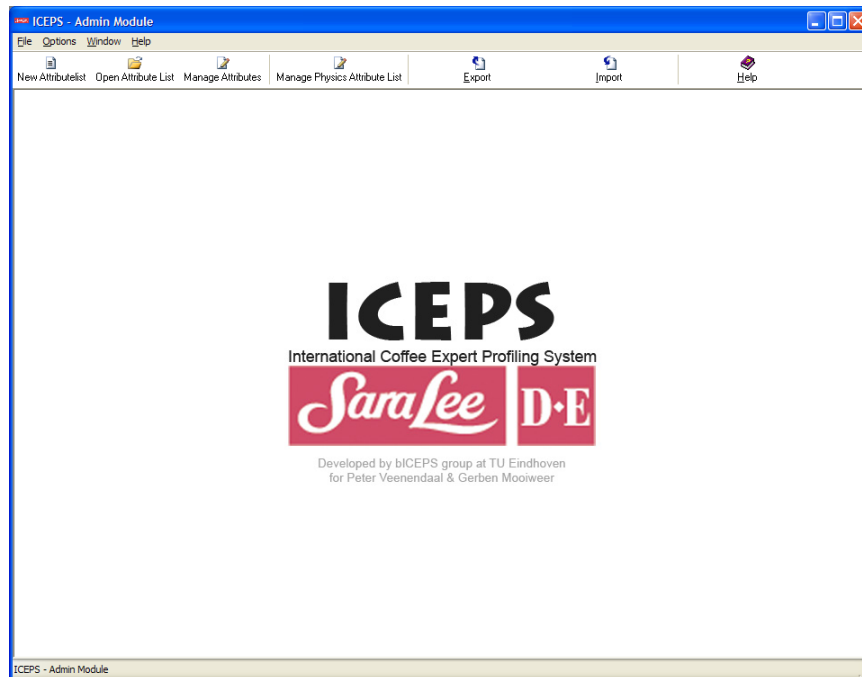


Figure 4.20: ICEPS main administration screen

Likely errors

- If you did not fill in "admin" in the *Username* field, you cannot login as administrator.
- If you did not supply the right password in the *Password* field, you cannot login. Please check your password and re-enter it.

4.2.2 Managing protected attributes

Functional description

This tutorial describes how to manage (create and delete) protected attributes. These protected attributes can later on be used to form attribute lists.

Cautions and warnings

You have to be logged in as administrator to follow this tutorial.

Please note that once you deleted a protected attribute, it will still be available in previously created attribute lists but cannot be used in newly created attribute lists.

Procedure

To manage protected attributes, click on the toolbar button labeled *Manage Attributes* or, alternatively, select *Files -> Manage Attributes* from the menu. This will bring up the manage protected attributes screen, as shown in figure 4.21.

All protected attributes are displayed in their corresponding category. You are now able to add protected attributes and to delete protected attributes. Deleting an attribute will make it unavailable for use in a newly created attribute lists. It will still be listed in previously created attribute lists though.

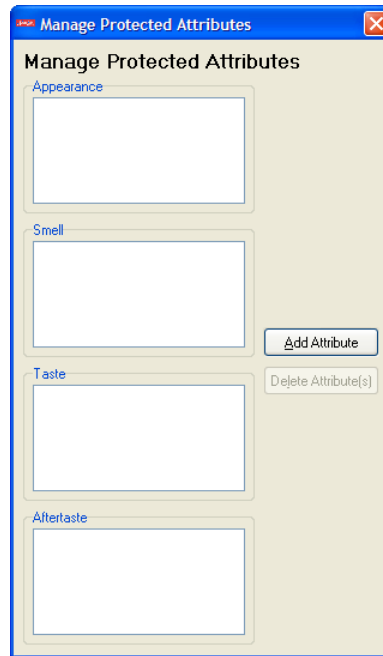


Figure 4.21: Manage protected attributes screen

To add a new protected attribute, click on the button labeled *Add Attribute*, the add new protected attribute screen will show up, as shown in figure 4.22.



Figure 4.22: Add new protected attribute screen

First, select the desired category for the new protected attribute in the *Category* dropdownlist. Now fill in a name for the new protected attribute in the *Attribute Name* field. Finally, click *Ok* to add the protected attribute to the list.

To delete a protected attribute, first, select the desired attribute. It is also possible to select more than one attribute at a time: If the attributes you want to select are in the same category, hold ctrl and click on the desired attributes. If the attributes are in different categories you can just click them. A combination of both is possible, too. Finally, to delete the selected protected attribute(s), click on the button labeled *Delete Attributes*. Now, a messagebox will appear, asking for confirmation. Click on *Yes* to confirm the deletion of the protected attributes, or click on *No* to abort the operation.

Likely errors

- While adding a new protected attribute: If you enter an attribute name in the *Attribute Name* field that already exists in the selected category, an error message will show. Please change your attribute name into one that is not yet in use.

4.2.3 Creating protected attribute lists

Functional description

This tutorial describes how to create a new protected attribute list. A protected attribute list contains only protected attributes.

Cautions and warnings

You have to be logged in as administrator to follow this tutorial.

Procedure

To create a new protected attribute list, click on the toolbar button labeled *New Attribute list* or, alternatively, select *File -> New Attribute list* from the menu. This will bring up the create protected attribute list screen as shown in figure 4.23.

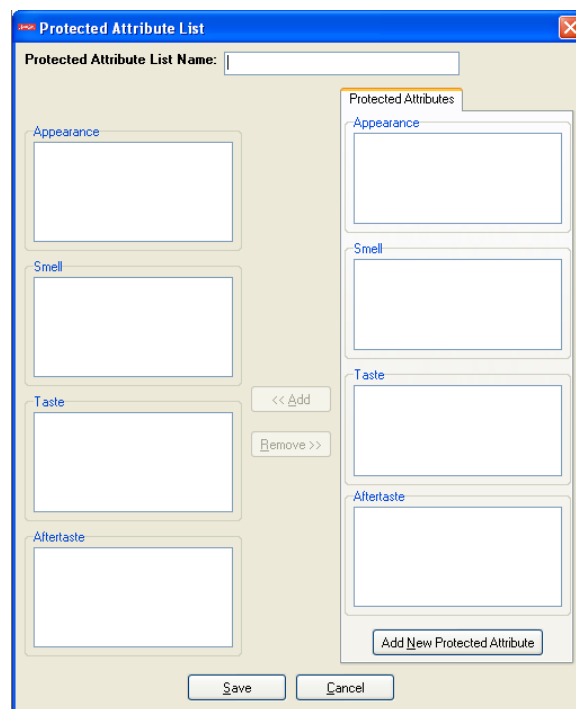


Figure 4.23: Create protected attribute list screen

The first thing to do, is fill in a name for the new protected attribute list in the *Attribute list Name* field. Please note that if you fill in a name of an already existing list, this list will be overwritten.

Now you can add attributes to the list. On the left are four category-lists, this is your protected attribute list. On the right are also four category-lists. To add a protected attribute to your protected attribute list, select one or more attributes on the right (multiple attributes can be selected by holding the ctrl key and clicking), and click the button labeled *Add*. The selected attributes will now move to your protected attribute list. An alternative way to add attributes is to select one or more attributes

in one category and drag them to the same category in your protected attribute list on the left.

To remove an attribute from your protected attribute list, select one or more attributes in the lists on the left and click the button labeled *Remove*. The selected attributes will now move back to the right.

To finish creating your protected attribute list, click on the button labeled *Save List*. The list will now be saved and can be exported (see section 4.2.6).

Likely errors

- If the name supplied in the *Attribute list Name* field already exists for another protected attribute list, upon saving, a warning message will appear. If you click *Ok*, the previous version of the attribute list with this name will be overwritten.

4.2.4 Editing and deleting protected attribute lists

Functional description

This tutorial describes how to edit or delete any of the protected attribute lists.

Cautions and warnings

You have to be logged in as administrator to follow this tutorial.

Procedure

To edit or delete a protected attribute list, first click on the toolbar button labeled *Open Attribute list*, or, alternatively, select *File->Open Attribute list* from the menu. Now the protected attribute lists screen will appear, as shown in figure 4.24.

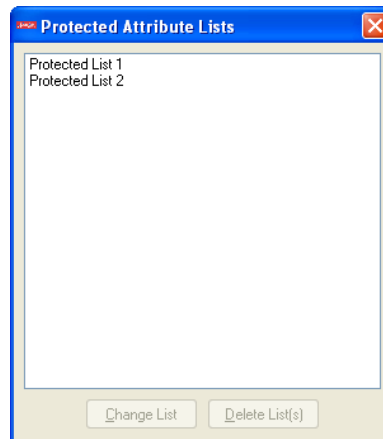


Figure 4.24: Protected attribute lists screen

To edit a protected attribute list, select a name in the list and click the button labeled *Change List*. Now the change protected attribute list screen will appear, and you can edit your list as described in 4.2.3.

To delete a protected attribute list, select a name in the list and click the button labeled *Delete List*. Now a message box asking for confirmation will show up. Click *Yes* to delete the list, or click *No* to abort the operation. If you clicked *Yes* the protected attribute list will now disappear from the list, otherwise, nothing happens.

Likely errors

None

4.2.5 Managing the list of physical attributes

Functional description

This tutorial describes how to manage the list of physics attributes.

Cautions and warnings

You have to be logged in as administrator to follow this tutorial.

Please note that once you delete a physics attribute from the list, it is not possible to recover it.

Procedure

To open the current list of physical attributes, click on the toolbar button labeled *Manage Physics Attribute list*. Now the manage physics attribute list screen will appear, as shown in figure 4.25.



Figure 4.25: Manage physics attribute screen

To add a new physics attribute to the list, click on the button labeled *Add Attribute*. This will bring up the add new physics attribute screen, shown in figure 4.26.

Now fill in a name for the new attribute in the *Attribute Name* field. To add the attribute to the list, click the button labeled *Ok*. To abort the operation, click *Cancel*.

To delete a physics attribute, select an attribute in the manage physics attribute screen. To delete the selected attribute, click the button labeled *Delete Attribute*. A messagebox will now ask for confirmation. To really delete the attribute, click the button labeled *Yes* in this messagebox. To abort the operation, click *No*. If you clicked *Yes*, the attribute will disappear from the list.

Likely errors

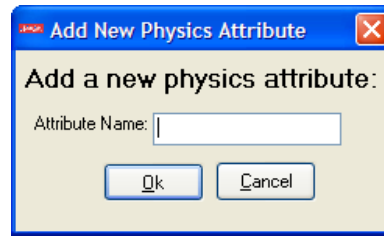


Figure 4.26: Add new physics attribute screen

- While adding a new physics attribute: If you enter an attribute name in the *Attribute Name* field that already exists in the physics attribute list, an error message will show. Please change your attribute name into one that is not yet in use.

4.2.6 Exporting protected data

Functional description

This tutorial describes how to export protected attributes and protected attribute lists, as well as the physics attribute list to a file. This file can then be imported by an ICEPS end-user.

Cautions and warnings

You have to be logged in as administrator to follow this tutorial.

Procedure

The steps for exporting both types of data are almost the same. Therefore we will only discuss the steps once and indicate where both procedures differ.

To export any data to a file, first click on the toolbar button labeled *Export* and then choose the desired type of data to export. Another option is to select *Options -> Export Protected Attributes Lists* or *Options -> Export List Of Physical Attributes* from the menu. This is the only step where both procedures differ, so be sure to pick the right option.

After selecting one of the previously mentioned options, a standard Windows file save dialog will appear. Browse for the location where you want to save the file and enter the desired filename in the *Filename* textbox. Then click *Ok*.

The protected data will now be exported to an ICEPS readable file. These files can then be distributed to end-users, who can import them.

Likely errors

None

Chapter 5

References

This chapter is divided into two sections, one for end-users and one for administrators. Login and registration procedures are only described in the end-user reference.

5.1 End-user reference

This section serves as a reference for end-users of the ICEPS system. Every screen in the system is documented here, along with all possible operations in the screen, examples of usage, possible errors and references to related screens.

5.1.1 Login screen

Functional description

This screen is the first screen that shows up when you start ICEPS. It is used to enter the user's username and password so the user can login to the ICEPS system. Also, there is a registration button for new users.



Figure 5.1: Login screen

Cautions and warnings

None

Operations

Operation	Steps	Result
Set login username	- Enter the username in the <i>Username</i> field	Upon the "Login" operation, the entered username will be used as username.
Set login password	- Enter the password in the <i>Password</i> field	Upon the "Login" operation, the entered password will be used as password.
Login	- Set the username and password (possibly empty) - Click <i>Login</i>	The login screen will close and the ICEPS main screen will appear, you are logged in.
Close ICEPS	- Click <i>Cancel</i>	ICEPS will close.
Open registration screen	- Click <i>Register new user</i>	The registration screen will appear, see section 5.1.2.

Possible errors

Error message	Cause
<i>Please fill in a username</i>	You did not supply a username in the <i>Username</i> field.
<i>Username or password incorrect</i>	The supplied username is not registered, or your password is incorrect.

Related screens

Reference topic	Section
Registration screen	5.1.2
ICEPS main screen	5.1.3

5.1.2 Registration screen

Functional description

This screen offers the functionality for registering a new user in the ICEPS system on your local computer.

The screenshot shows a dialog box titled "ICEPS: Login" with a blue header. Inside the dialog, there is a section titled "Create a new user". Below this title are four text input fields labeled "Name:", "Username:", "Password:", and "Confirm Password:". At the bottom of the dialog, there are two buttons: "Register" and "Cancel".

Figure 5.2: Registration screen

Cautions and warnings

Once you registered on a computer, you are only registered on that very computer. If you want to work in ICEPS again on another computer, you will have to register again.

Operations

Operation	Steps	Result
Set name	- Enter your real name in the <i>Name</i> field	Upon the "Register" operation, the entered name will be used as name.
Set username	- Enter your employee number in the <i>Username</i> field	Upon the "Register" operation, the entered employee number will be used as username.
Set password	- Enter your desired password in the <i>Password</i> field. If you do not want to use a password, leave this field empty. - Enter the password you entered in the previous step again in the <i>Confirm Password</i> field. If you did not enter a password in the previous step, leave this field empty.	Upon the "Register" operation, the entered password will be used as password.
Register	- Set all fields in the screen - Click <i>Register</i>	The login screen will appear, and you can now login with the username and password you just supplied.
Cancel registration	- Click <i>Cancel</i>	The login screen will appear, you did not register as a new user.

Possible errors

Error message	Cause
<i>Please fill in your name</i>	You did not supply your real name in the <i>Name</i> field
<i>Please fill in a username</i>	You did not supply your employee number in the <i>Username</i> field
<i>The supplied passwords do not match</i>	The passwords in the <i>Password</i> and <i>Confirm Password</i> fields are not the same

Related screens

Reference topic	Section
Login screen	5.1.1

5.1.3 ICEPS main screen

Functional description

This is the main screen of the ICEPS system. It mainly serves two purposes: firstly, to display all active screens the user has opened. Secondly, to act as an interface from which the user can open various screens that provide the main functionality of ICEPS.

The top of the screen consists of a menu bar (displaying file, visualization, database etc.) and a toolbar with graphical buttons. All relevant screens can be opened from the menu. The toolbar acts as a shortcut for the menu and contains buttons for most screens in ICEPS.

The center of the screen is called the "workspace" and will contain all open screens.

The bottom of the screen consists of a statusbar that will display short help messages for every toolbar button.

Cautions and warnings

All screens that open up within the ICEPS main screen can be closed without closing ICEPS. If you close the ICEPS main screen, however, ICEPS will be closed too.

Operations

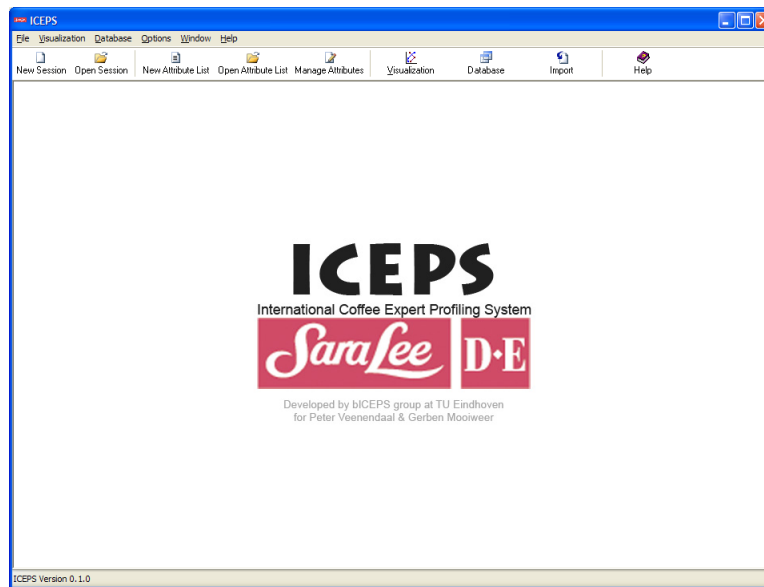


Figure 5.3: ICEPS main screen

Operation	Steps	Result
Open the new session screen	- Click on the toolbarbutton labeled <i>New Session</i> or select <i>File->New Session</i> from the menu	The create new session screen will appear (section 5.1.7).
Open the open session screen	- Click on the toolbarbutton labeled <i>Open Session</i> or select <i>File->Open Session</i> from the menu	The open session screen will appear (section 5.1.5).
Open the new custom attribute list screen	- Click on the toolbarbutton labeled <i>New Attribute list</i> or select <i>File->New Attribute list</i> from the menu	The custom attribute list screen will appear (section 5.1.11).
Open the open custom attribute list screen	- Click on the toolbarbutton labeled <i>Open Attribute list</i> or select <i>File->Open Attribute list</i> from the menu	The open custom attribute list screen will appear (section 5.1.12).
Open the manage custom attributes screen	- Click on the toolbarbutton labeled <i>Manage Attributes</i> or select <i>File->Manage Attributes</i> from the menu	The manage custom attributes screen will appear (section 5.1.13).
Open the PCA mapping options screen	- Click on the toolbarbutton labeled <i>Visualization</i> and click on <i>PCA Mapping</i> or select <i>Visualization->PCA Mapping</i> from the menu	The pca mapping options screen will appear (section 5.1.15).
Open the graph options screen	- Click on the toolbarbutton labeled <i>Visualization</i> and click on <i>Graph</i> or select <i>Visualization->Graph</i> from the menu	The graph options screen will appear (section 5.1.17).
Open the database operations screen	- Click on the toolbarbutton labeled <i>Database</i> or select <i>Database->Show Database Operations</i> from the menu	The database operations screen will appear (section 5.1.19).

Import protected attributes and protected attribute lists	<ul style="list-style-type: none"> - Click on the toolbarbutton labeled <i>Import</i> and click on <i>Attributes & Lists</i> or select <i>Options->Import Protected Attributes & Lists</i> from the menu - Now a standard Windows open file dialog will appear. Browse for the file you want to import and click on it, then click <i>Open</i> 	The file with protected attributes and protected attribute lists will be imported. The contents of the files (attributes and attribute lists) can now be used for new sessions.
Import physical attribute list	<ul style="list-style-type: none"> - Click on the toolbarbutton labeled <i>Import</i> and click on <i>Physics</i> or select <i>Options->Import List Of Physical Attributes</i> from the menu - Now a standard Windows open file dialog will appear. Browse for the file you want to import and click on it, then click <i>Open</i> 	The file with a list of physical attributes will be imported. This list will now be used for all samples created in the future.
Open the log file	<ul style="list-style-type: none"> - Select <i>Options->Show Log</i> from the menu 	The show log screen will appear (section 5.1.6)
Open the help interface	<ul style="list-style-type: none"> - Click on the toolbarbutton labeled <i>Help</i> or select <i>Help->ICEPS Help</i> from the menu 	The help interface will appear.
Open the change password screen	<ul style="list-style-type: none"> - Select <i>Options->Change Password</i> from the menu 	The change password screen will appear (section 5.1.4).
Tile open screens	<ul style="list-style-type: none"> - Select <i>Window->Tile</i> from the menu 	All open screens will be tiled.
Cascade open screens	<ul style="list-style-type: none"> - Select <i>Window->Cascade</i> from the menu 	The open screens will be cascaded.
Close all open screens	<ul style="list-style-type: none"> - Select <i>Window->Close All</i> from the menu 	All open windows will be closed.
Bring a certain screen to the foreground	<ul style="list-style-type: none"> - Select <i>Window</i> from the menu - Now click on the name of the screen you want on the foreground 	The selected screen is brought to the foreground.

Possible errors

None

Related screens

Reference topic	Section
Change password screen	5.1.4
Open session screen	5.1.5
Show log screen	5.1.6
Create new session screen	5.1.7
Custom attribute list screen	5.1.11
Open custom attribute list screen	5.1.12
Manage custom attributes screen	5.1.13
PCA mapping options screen	5.1.15
Graph options screen	5.1.17
Database operations screen	5.1.19

5.1.4 Change password screen

Functional description

This screen offers the possibility to change the password you use to login.

Figure 5.4: Change password screen

Cautions and warnings

There is no way to retrieve your password if you forget it, so please make sure you remember your new password.

Operations

Operation	Steps	Result
Set current password	- Enter your current password in the <i>Old Password</i> field	Upon the "Change password" operation, the entered password will be checked against your current password, both should be the same.
Set new password	- Enter your desired new password in the <i>New Password</i> field. Leave this empty if you do not want to use a password to login. - Enter the password entered in the previous step, again in the <i>Confirm Password</i> field. If you left the <i>New Password</i> field empty, leave this field empty too.	Upon the "Change password" operation, the entered passwords will be used as the new password.
Change password	- Set all fields in this screen - Click <i>Ok</i>	The change password screen will close and your password has now changed into the value you entered in <i>New Password</i> .
Cancel password change	- Click <i>Cancel</i>	The change password screen will close and your password has not been changed.

Possible errors

Error message	Cause
<i>The old password is incorrect</i>	The password supplied in <i>Old Password</i> is not correct.
<i>The supplied passwords do not match</i>	The values entered in the <i>New Password</i> and <i>Confirm Password</i> fields are not the same.

Related screens

None

5.1.5 Open session screen

Functional description

This screen offers the functionality to open, delete, close or export an existing session. The top half of the screen displays a list of existing open sessions. The bottom half displays information for the selected session.

All exports are logged, this log can also be brought up from this screen.

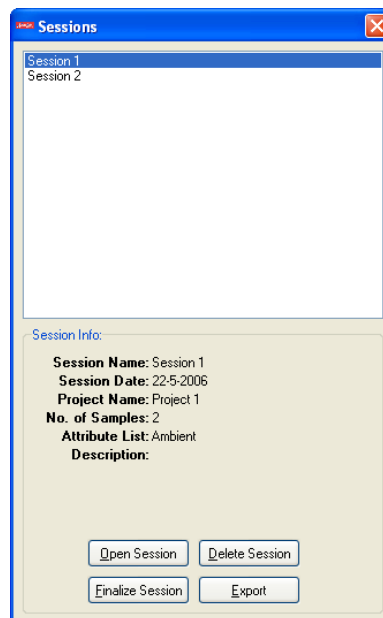


Figure 5.5: Open session screen

Cautions and warnings

Once you delete a session, it cannot be recovered anymore.

Closed sessions cannot be opened again.

Operations

Operation	Steps	Result
Display session information	- Select a session from the list	All available session information will be displayed in the lower half of the screen.
Open session	- Select a session from the list - Click <i>Open Session</i>	The open session screen will close and the session screen (section 5.1.8) will appear, showing the session you just selected.
Delete session	- Select a session from the list - Click <i>Delete Session</i>	A messagebox asking for confirmation will appear. Upon confirmation the session will be deleted and removed from the session list.
Close session	- Select a session from the list - Click <i>Finalize Session</i>	A messagebox asking for confirmation will appear. Upon confirmation
Export session to Excel file	- Select a session from the list - Click <i>Export</i> and select <i>Export to Excel</i> - A standard Windows save file dialog will appear. Browse for the location where you want to save the file. - Enter the desired filename in the <i>File-name</i> field - Click <i>Save</i>	The session (and samples it contains) will be exported to a Microsoft Excel file.
Show export log	- Click <i>Export</i> and select <i>Show Export Log</i>	

Possible errors

None

Related screens

Reference topic	Section
Session screen	5.1.8

5.1.6 Show Log screen**Functional description**

This screen offers the possibility to view and clear the log file.

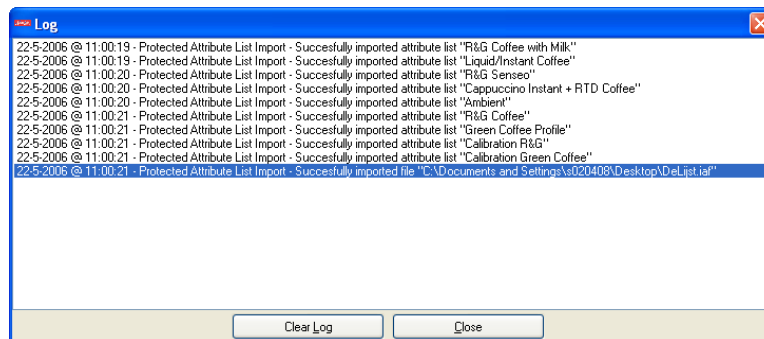


Figure 5.6: Show Log screen

Cautions and warnings

None

Operations		
Operation	Steps	Result
Clear log	- Click <i>Clear Log</i>	Upon the "Clear Log" operation, the log file will be cleared.

Possible errors

None

Related screens

None

5.1.7 Create new session screen

Functional description

This screen offers the functionality to create a new session. It asks for some basic information and creates a session using this information.

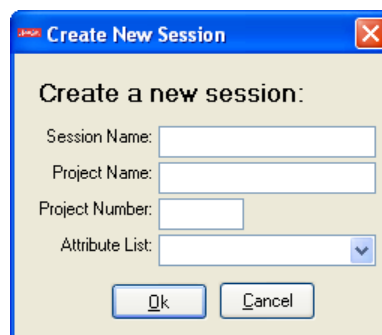


Figure 5.7: Create new session screen

Cautions and warnings

The information filled in in this screen cannot be changed after pressing *Ok*.

Operations

Operation	Steps	Result
Set new session name	- Enter a name for the session in the <i>Session Name</i> field	Upon the "Create new session" operation, the entered name will be used as name for the session.
Set project name	- (Optional) Enter the name of the project this session belongs to in the <i>Project Name</i> field	Upon the "Create new session" operation, the entered project name will be saved with the session.
Set project number	- (Optional) Enter the number of the project this session belongs to in the <i>Project Number</i> field	Upon the "Create new session" operation, the entered project number will be saved with the session.
Set attribute list	- Choose an attribute list from the <i>Attribute list</i> dropdownlist	Upon the "Create new session" operation, the chosen attribute list will be used for the session.
Create new session	- Set the session name and attribute list (project name and number are optional) - Click <i>Ok</i>	The new session screen will close and the session screen (section 5.1.8) will appear, containing your newly created session.
Cancel creation	- Click <i>Cancel</i>	The new session screen will close and the create new session screen will close and no new session is created.

Possible errors

Error message	Cause
<i>Please enter a session name</i>	You did not enter a session name in the <i>Session Name</i> field.
<i>Please choose an attribute list</i>	You did not choose an attribute list in the <i>Attribute list</i> dropdownlist.

Related screens

Reference topic	Section
Session screen	5.1.8

5.1.8 Session screen

Functional description

This screen offers an overview of all information for a session and all samples for this session. It also serves as a starting point for starting new sample evaluations and manipulating the samples in the session.

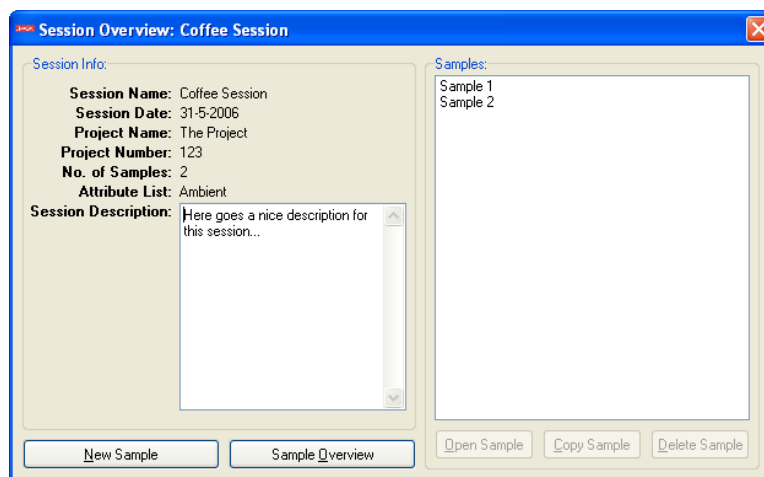


Figure 5.8: Session screen

Cautions and warnings

Once you delete a sample, there is no way to recover it.

Operations

Operation	Steps	Result
Change session description	- Enter the desired description in the <i>Description</i> textbox	The description will be automatically saved
Start new sample evaluation	- Click <i>New Sample</i> - Enter a new for the sample	The sample evaluation screen (section 5.1.9) will appear.
Delete sample	- Select the sample you want to delete in the list on the right - Click <i>Delete Sample</i>	A messagebox asking for confirmation will appear. Upon confirmation the sample will be deleted and removed from the list of samples.
Copy sample	- Select the sample you want to copy from the list on the right - Click <i>Copy Sample</i> - Enter a name for the copy - Click <i>Ok</i>	The selected sample is copied and added to the list under the name you gave in step three.
Open sample for evaluation	- Select the sample you want to open from the list on the right - Click <i>Open Sample</i> or double click on the sample in the list	The sample evaluation screen (section 5.1.9) will appear, showing the evaluation for the selected sample.
Show sample overview	- Click <i>Sample Overview</i>	The sample overview screen (section 5.1.10) will appear, showing an overview of the samples for this session.

Possible errors

Error message	Cause
<i>A sample with this name already exist</i>	The name you entered upon creating or copying a sample already exists in this session.

Related screens

Reference topic	Section
Sample evaluation screen	5.1.9
Sample overview screen	5.1.10

5.1.9 Sample evaluation screen**Functional description**

This screen contains all necessary functions to evaluate a sample. Furthermore the quality mark, remarks and physical attributes of a sample can be entered in this screen.

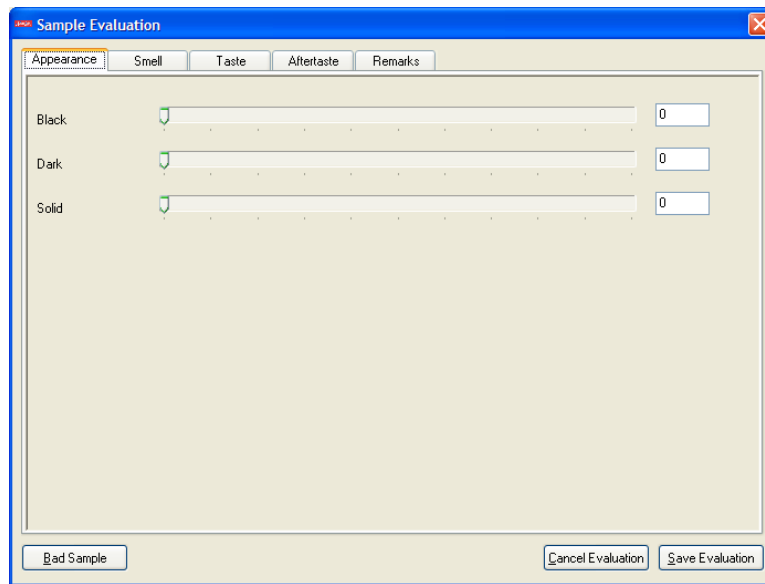
The screen consists of a maximum of 6 tabs and 3 buttons. The four leftmost tabs are used for assigning scores to each attribute. The fifth tab is used for the quality mark and remarks, while the sixth tab is used for assigning values to the list of physical attributes.

The buttons are used to control the course of the evaluation, they can be used to save and cancel the evaluation and to mark a sample as "bad".

Cautions and warnings

We assume the chosen attribute list has attributes for all tabs. If a tab has no attributes, it will not be visible.

When canceling an evaluation, all entered information will be discarded, there is no way to retrieve this information once an evaluation is canceled by the user.



The screenshot shows a window titled "Sample Evaluation" with a blue title bar and a close button. The window contains a tabbed interface with four tabs: "Appearance", "Smell", "Taste", and "Aftertaste", and a "Remarks" section. The "Appearance" tab is active, showing three rows of evaluation criteria: "Black", "Dark", and "Solid". Each row has a green checkmark icon, a horizontal scale bar, and a numerical input field containing the value "0". At the bottom of the window, there are three buttons: "Bad Sample", "Cancel Evaluation", and "Save Evaluation".

Figure 5.9: Sample evaluation screen

Operation	Steps	Result
Evaluate an attribute	<ul style="list-style-type: none"> - Select one of the four leftmost tabs - Drag the slider next to an attribute name to the desired position, the textbox on the right will display the current value - (Alternative to previous step) Enter a number in the range [0..100] in the textbox on the right, the slider will automatically move to this position - Select any other control in the screen 	The evaluation for this attribute is saved.
Enter quality mark	<ul style="list-style-type: none"> - Select the tab labeled <i>Remarks</i> - Enter a value in the range [0..10] in the <i>Quality Mark</i> field. You can use a precision of 1 hundredth, use a comma or dot as decimal separator - Select any other control in the screen 	The quality mark is saved.
Enter remark	<ul style="list-style-type: none"> - Select the tab labeled <i>Remarks</i> - Enter a remark in the <i>Remarks</i> textbox - Select any other control in the screen 	The remark is saved.
Enter physical attribute	<ul style="list-style-type: none"> - Select the tab labeled <i>Physics</i> - Enter a value in the textbox next to the name of a physical attribute - Select any other control in the screen 	The value for the physical attribute is saved.
Mark sample as "bad"	<ul style="list-style-type: none"> - Click <i>Bad Sample</i> 	All attributes that were not evaluated yet will be given a score of 0, the sample will receive a quality mark of 0.0 and the <i>Remarks</i> textbox will contain the text "« Bad Sample »". The tab labeled <i>Remarks</i> will be selected.
Save evaluation	<ul style="list-style-type: none"> - Click <i>Save Evaluation</i> 	The sample evaluation screen will close and the sample evaluation is saved.
Cancel evaluation	<ul style="list-style-type: none"> - Click <i>Cancel Evaluation</i> or close the sample evaluation screen by clicking the cross in the right upper corner - Click <i>Yes</i> in the messagebox 	The sample evaluation screen will close and the sample and its evaluation is discarded.

Possible errors

Error message	Cause
<i>Please enter a number between 0 and 10</i>	You entered a value outside the range [0..10] or a non-number in the <i>Quality Mark</i> field.

Related screens

None

5.1.10 Sample overview screen**Functional description**

This screen contains an overview of all samples in a session. The session information box at the top contains a summary of the available information for the session. The table on the bottom part of the screen contains an overview of all samples (each sample has its own column) and for each sample their scores for each attribute, the quality mark and scores for physical attributes.

It is possible to change the displayed attribute values in this screen.

Furthermore a graph of all the sample can be generated and the overview can be printed.

Sample Overview For Session: Session 1

Session Information:

Session Name: Session 1
 Session Date: 20-5-2006
 Project Name: Project 1
 No. of Samples: 2

Buttons: Print, Show Graph

Samples:

	Sample 1	Sample 2
Appearance		
Smell		
test	16.9	15.95
Taste		
Aftertaste		
Quality mark	9.0	1.0
Physics		

Button: Save changes

Figure 5.10: Sample overview screen

Cautions and warnings

If this screen was opened from the closed sessions overview screen (section 5.1.20), only the physical attribute scores can be changed.

Operations

Operation	Steps	Result
Print sample overview	- Click <i>Print</i> - A standard Windows print dialog will appear, select the desired options and click <i>Print</i>	The sample overview will be printed.
Show graph for all samples	- Click <i>Show Graph</i>	The graph screen (section 5.1.18) will appear, containing the samples shown in the sample overview screen.
Change attribute score (normal or physical)	- Double click on a value in a row with an attributename - Enter a value in the range [0..100] - Select any other field in the table	The new value is saved.

Possible errors

Error message	Cause
<i>This is not a valid score</i>	You entered a value outside of the range [0..100] in an attribute value field.
<i>This is not a valid quality mark</i>	You entered a value outside of the range [0..10] in a quality mark field.

Related screens

Reference topic	Section
Graph screen	5.1.18

5.1.11 Custom attribute list screen

Functional description

This screen contains all functionality to compose a custom attribute list out of protected and custom attributes. The screen is used for both creating new custom attribute lists as well as for changing existing lists. It also contains a button to quickly add a new custom attribute.

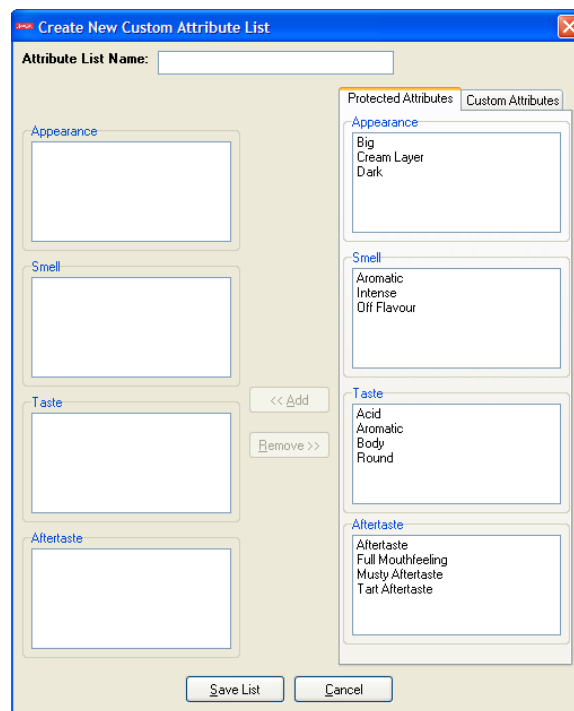


Figure 5.11: Custom attribute list screen

Cautions and warnings

If you are changing an existing attribute list, upon saving, the old list version will be overwritten. From that point on it is no longer possible to use the old version of the list in newly created sessions.

Operations

Operation	Steps	Result
Set attribute list name	- Enter the desired name in the <i>Attribute list Name</i> field	Upon saving this list, the entered value will be used as identifying name for the list.
Add protected attribute(s) to custom attribute list	- Select the tab labeled <i>Protected Attributes</i> Alternative 1 - Select one or more (by holding ctrl and clicking) attributes you want to add to the list (you can pick multiple attributes in multiple categories) - Click <i>Add</i> Alternative 2 - Select one or more (by holding ctrl and clicking) attributes you want to add to the list (all attributes must be in the same category) - Click and hold the left mouse button, now drag to the same category on the left side of the screen - Release the left mouse button when inside the category list on the left	The selected attributes will have moved from the lists on the right to the lists on the left. Upon saving this custom attribute list, all attributes in the lists on the left will be in the custom attribute list.
Add custom attribute(s) to custom attribute list	- See "Add protected attribute to list", make sure you select the tab labeled <i>Custom Attributes</i> instead of <i>Protected Attributes</i>	The selected attributes will have moved from the lists on the right to the lists on the left. Upon saving this custom attribute list, all attributes in the lists on the left will be in the custom attribute list.
Remove attribute(s) from custom attribute list	- Select one or more (by holding ctrl and clicking) attributes in the categories on the left - Click <i>Remove</i>	The selected attributes will have moved from the lists on the left to the lists on the right. Upon saving this custom attribute list, all attributes in the lists on the left will be in the custom attribute list.
Open add new custom attribute screen	- Select the tab labeled <i>Custom Attributes</i> - Click <i>Add New Custom Attribute</i>	The add new custom attribute screen (section 5.1.14) will appear.
Save custom attribute list	- Click <i>Save List</i>	The custom attribute list screen closes and the custom attribute list is saved. The attribute list can now be used in newly created sessions.
Cancel changes/creation	- Click <i>Cancel</i> or close the screen by clicking the cross in the right upper corner	A messagebox will ask for confirmation. Upon confirmation the custom attribute list screen will close and all changes will be discarded, if you were in the process of creating a new attribute list, no list is created.

Possible errors

Error message	Cause
<i>Please enter a name for the list</i>	You did not enter a name for the attribute list in the <i>Attribute list Name</i> field.
<i>List cannot be empty</i>	You did not add any attributes to the attribute list.

Related screens

Reference topic	Section
Add new custom attribute screen	5.1.14

5.1.12 Open custom attribute list screen**Functional description**

This screen contains the functionality to open or disable a custom attribute list. It consists of a list of available custom attribute lists and two buttons to open or disable a list. Disabling a list will make it unavailable for future use in new sessions, but keep it available for earlier created sessions.

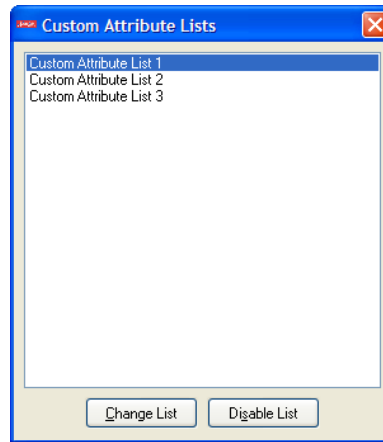


Figure 5.12: Open custom attribute list screen

Cautions and warnings

Once you disable a custom attribute list, there is no way to recover it.

Operations

Operation	Steps	Result
Open custom attribute list	<ul style="list-style-type: none"> - Select the desired custom attribute list in the listbox - Click <i>Change List</i> 	The custom attribute list screen (section 5.1.11) will appear.
Disable custom attribute list	<ul style="list-style-type: none"> - Select the desired custom attribute list in the listbox - Click <i>Disable List</i> 	A messagebox asking for confirmation will appear. Upon confirmation the selected attribute list will be disabled for future use.

Possible errors

None

Related screens

Reference topic	Section
Custom attribute list screen	5.1.11

5.1.13 Manage custom attributes screen**Functional description**

This screen contains all the functionality to maintain your custom attributes. These custom attributes can be used to form custom attribute lists. Custom attributes can be added or disabled in this screen. Disabling an attribute will make it unavailable for use in newly created attribute lists. It will, however, stay available for existing custom attribute lists.

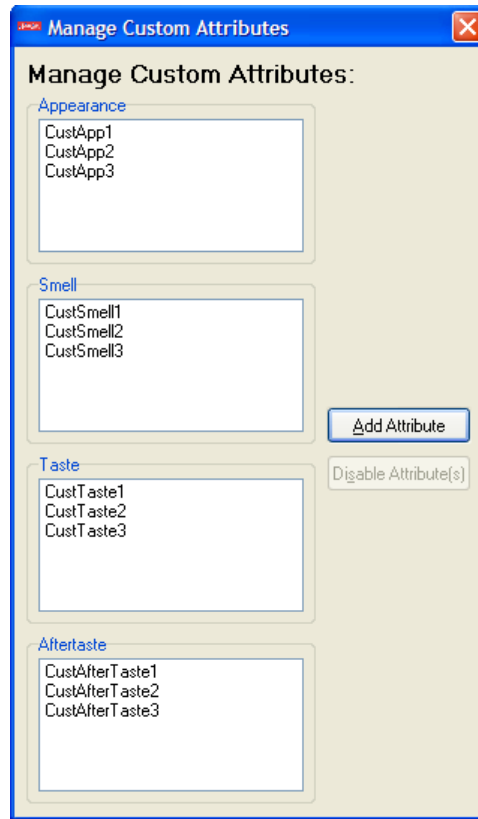


Figure 5.13: Manage custom attributes screen

Cautions and warnings

Once you disable a custom attribute, there is no way to recover it.

A disabled attribute that is still in a custom attribute list, and then is removed from that attribute list, cannot be added again because it is disabled.

Operations

Operation	Steps	Result
Open add new custom attribute screen	- Click <i>Add Attribute</i>	The add new custom attribute screen (section 5.1.14) will appear.
Disable attribute	- Select one or more (by holding ctrl and clicking) attributes you wish to disable - Click <i>Disable Attribute(s)</i>	A message box will appear, asking for confirmation. Upon confirmation, the selected attributes will be disabled for future use and removed from the category lists.

Possible errors

None

Related screens Reference topic	Section
Add new custom attribute screen	5.1.14

5.1.14 Add new custom attribute screen

Functional description

This screen offers the functionality to give a name and category for a new custom attribute. This screen can only be brought up from the manage custom attributes screen (5.1.13).



Figure 5.14: Add new custom attribute screen

Cautions and warnings

None

Operations

Operation	Steps	Result
Set attribute category	- Select the desired category from the <i>Category</i> dropdownlist	Upon the "Add attribute" operation, the selected category will be used as category for the new attribute.
Set attribute name	- Enter the desired name in the <i>Attribute Name</i> field	Upon the "Add attribute" operation, the entered name will be used as the name for the new attribute.
Add attribute	- Set the <i>Category</i> and <i>Attribute Name</i> fields - Click <i>Ok</i>	The add new custom attribute screen will close and the new attribute is added to the list of its category.

Possible errors

Error message	Cause
<i>There already exists an attribute with the same name</i>	You entered an attribute name in the <i>Attribute Name</i> field that already exists in the category selected in the <i>Category</i> dropdownlist.

Related screens Reference topic	Section
Manage custom attributes screen	5.1.13

5.1.15 PCA mapping options screen

Functional description

This screen offers the functionality to set the options for a PCA mapping which can then be generated. The list on the left displays a treeview of sessions and samples. The panel on the right shows session and sample information for the selected session/sample.

Cautions and warnings

None

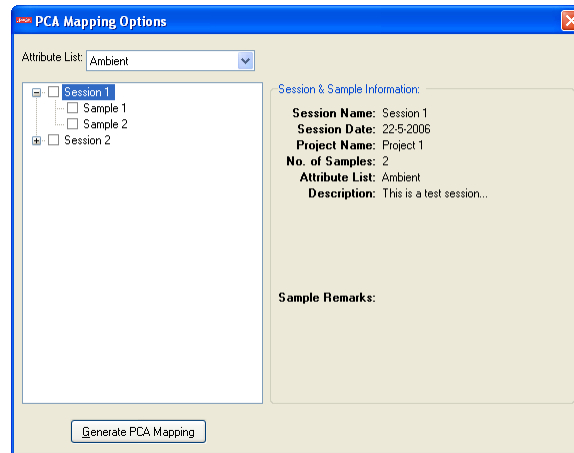


Figure 5.15: PCA mapping options screen

Operations			
Operation	Steps		Result
Select attribute list	- Select the desired attribute list from the <i>Attribute List</i> dropdown list.		The list on the left will display all open and finalized sessions, using the selected attribute list.
Select samples for PCA mapping	- Click on a checkbox in front of a session or sample in the list on the left		Clicking on a checkbox in front of a session will select all its samples. All checked samples will be included in the PCA mapping.
Display session information	- Click on a session in the list on the left		The panel on the right will show all relevant session information.
Display sample description	- Click on a sample in the list on the left		The panel on the right will show the sample's session information as well as the sample description.
Generate PCA mapping	- Click on the button labeled <i>Generate PCA Mapping</i>		The PCA mapping screen (section 5.1.16) will appear. Containing a PCA mapping of all selected samples.

Possible errors		
Error message		Cause
<i>Please select at least 2 samples</i>		You did not select at least 2 samples in the list on the left of the screen.

Related screens		
Reference topic		Section
PCA mapping screen		5.1.16

5.1.16 PCA mapping screen

Functional description

This screen shows a PCA mapping and offers various controls for influencing the way the mapping is displayed.

Cautions and warnings

None

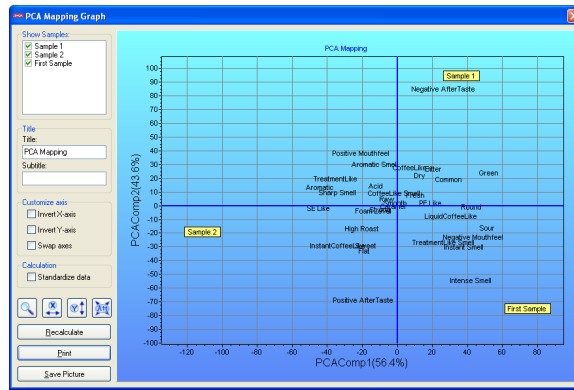


Figure 5.16: PCA mapping options screen

Operation	Steps	Result
Pan mapping	- Click and hold the right mouse button in the mapping	Dragging the mouse in any direction will pan the mapping in that direction.
Hide/unhide displayed sample labels	- Click on the check box in front of a sample name	The selected sample will disappear from the PCA mapping.
Change mapping title	- Edit the value in the <i>Title</i> field	The value in the <i>Title</i> field will appear above the PCA mapping.
Change mapping subtitle	- Edit the value in the <i>Subtitle</i> field	The value in the <i>Subtitle</i> field will appear below the title, above the PCA mapping.
Invert x-axis	- Click on the checkbox in front of the label <i>Invert X-Axis</i>	The attribute scores are inverted along the x-axis.
Invert y-axis	- Click on the checkbox in front of the label <i>Invert Y-Axis</i>	The attribute scores are inverted along the y-axis.
Swap x- and y-axis	- Click on the checkbox in front of the label <i>Swap axes</i>	The x- and y-axis are swapped.
Standardize attribute data	- Click on the checkbox in front of the label <i>Standardize data</i>	All attribute data is standardized.
Enter zoom mode	- Click on the magnifying glass button	Zoom mode is enabled. The magnifying glass button is pressed down.
Zoom in/out in zoom mode	- Click and hold the left mouse button in the mapping	When moving the mouse to the left, you zoom in. Moving the mouse to the right will zoom out.
Exit zoom mode	- Click on the pressed down magnifying glass button	Zoom mode is disabled. The magnifying glass button is not pressed down.
Enter zoom x-axis mode	- Click on the x button	Zoom x-axis mode is enabled. The x button is pressed down.
Zoom in/out in zoom x-axis mode	- Click and hold the left mouse button in the mapping	When moving the mouse to the left, you zoom in along the x-axis. Moving the mouse to the right will zoom out along the x-axis.
Exit zoom x-axis mode	- Click on the pressed x button	Zoom x-axis mode is disabled. The x button is not pressed down.
Enter zoom y-axis mode	- Click on the y button	Zoom y-axis mode is enabled. The y button is pressed down.

Zoom in/out in zoom y-axis mode	- Click and hold the left mouse button in the mapping	When moving the mouse to the left, you zoom in along the y-axis. Moving the mouse to the right will zoom out along the y-axis.
Exit zoom y-axis mode	- Click on the pressed y button	Zoom y-axis mode is disabled. The y button is not pressed down.
Enter attribute scale mode	- Click on the Att button	Attribute scale mode is enabled. The Att button is pressed down.
Scale in attribute scale mode	- Click and hold the left mouse button in the mapping	When moving the mouse to the left, you scale all values up. Moving the mouse to the right will scale all values down.
Exit attribute scale mode	- Click on the pressed Att button	Attribute scale mode is disabled. The Att button is not pressed down.
Recalculate mapping	- Click on the button labeled <i>Recalculate</i>	The mapping will be recalculated using only the selected samples in the listbox in the top-left of the screen.
Print mapping	- Click on the button labeled <i>Print</i>	A standard Windows print dialog will appear. Here you can edit the printer settings and print the mapping.
Save mapping to graphical file	- Click on the button labeled <i>Save Picture</i>	A standard Windows file save dialog will appear. Here you can choose a location and filename for your picture and select the format to save in.

Possible errors

Error message	Cause
<i>Not enough data to produce PCA mapping</i>	You did not select at least 2 samples in the list in the top-left of the screen.

Related screens

None

5.1.17 Graph options screen**Functional description**

This screen offers the functionality to set the options for a sample data graph which can then be generated. The list on the left displays a treeview of sessions and samples. The panel on the right shows session and sample information for the selected session/sample.

Cautions and warnings

None

Operations

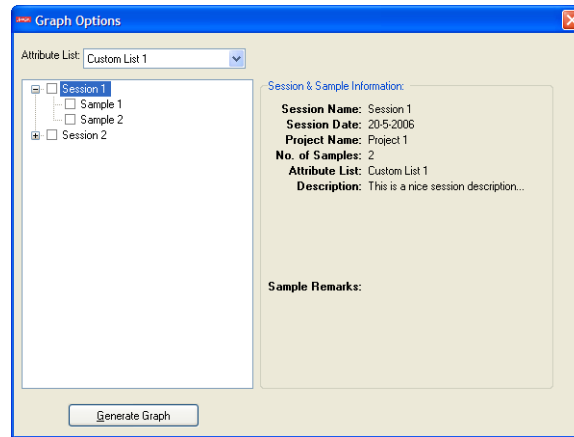


Figure 5.17: Graph options screen

Operation	Steps	Result
Show session's samples	- Click the plus-sign in front of the desired session	The tree will expand and show the names of the samples for this session.
Hide session's samples	- Click on the minus-sign in front of the desired session	The tree will collapse and hide the names of the samples for this session.
Generate graph	- Click on the checkbox of the sessions you would like to see a graph for, or, if it is expanded, click on one of its samples checkboxes - Click <i>Generate Graph</i>	The graph screen (section 5.1.18 will appear.

Possible errors

Error message	Cause
<i>Please select at least 1 sample</i>	None of the samples in the list on the left were selected.

Related screens

Reference topic	Section
Graph screen	5.1.18

5.1.18 Graph screen**Functional description**

This screen shows the graph based on the samples selected on the left of the screen. It also enables you to edit the graph and to print or save it.

Cautions and warnings

At most six samples can be selected to generate a graph.

If there were more than six samples selected in the graphoptions screen (section 5.1.17) the first six samples will be used to generate the graph.

Operations

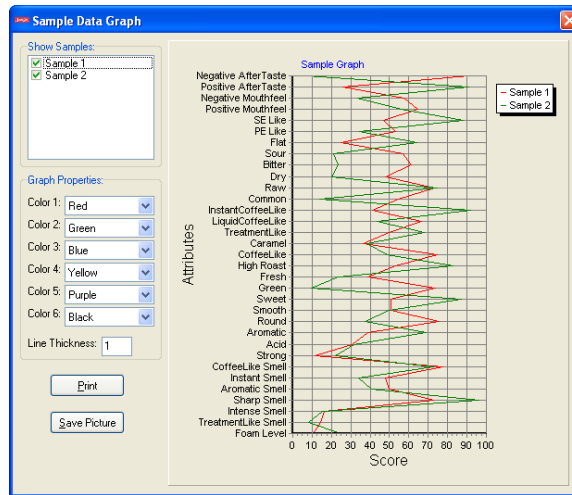


Figure 5.18: Custom attribute list screen

Operation	Steps	Result
Deselect a sample showed in the graph	- Click the checkbox in front of the sample you want to deselect	The sample will be removed from the graph on the right side of the screen.
Select a sample to be shown in the graph	- Click the checkbox in front of the sample you want to show	The sample will be added to the graph on the right side of the screen.
Change the color of a line in the graph.	- Select a color from any of the six drop-down lists.	The line color will change to the selected color.
Change the line thickness	- Set the <i>Line Thickness</i> field.	The graph line thickness will be changed.
Print the graph	- Click the <i>Print</i> button - A standard Windows print dialog will appear, select the desired options and click <i>Print</i>	The graph will be printed.
Save the picture	- Click the <i>Save Picture</i> button - A standard Windows save dialog will appear, select the desired options and click <i>Save</i> to save the data to a file	The graph will be saved.

Possible errors
None

Related screens
None

5.1.19 Database operations screen

Functional description

This screen consists of only buttons that will open up the closed sessions overview screen (section 5.1.20) with a list of matching sessions.

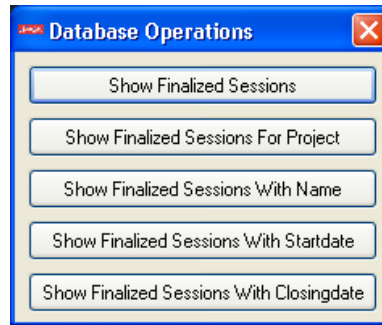


Figure 5.19: Database operations screen

Cautions and warnings

None

Operations

Operation	Steps	Result
Show all closed sessions	- Click <i>Show Closed Sessions</i>	The closed sessions overview screen (section 5.1.20) will appear with a list of all closed sessions.
Show all closed sessions with a certain project name	- Click <i>Show Closed Sessions For Project</i> - Enter the desired project name in the message box - Click <i>Ok</i>	The closed sessions overview screen (section 5.1.20) will appear with a list of all closed sessions with a project name value containing a part of or equal to the one just entered.
Show all closed sessions with a certain name	- Click <i>Show Closed Sessions With Name</i> - Enter the desired name in the message box - Click <i>Ok</i>	The closed sessions overview screen (section 5.1.20) will appear with a list of all closed sessions with a name that contains the value just entered (i.e. the entered value is a subset of the session name).
Show all closed sessions with a certain start date	- Click <i>Show Closed Sessions With Startdate</i> - Enter the desired start date in the message box (dd-mm-yyyy format) - Click <i>Ok</i>	The closed sessions overview screen (section 5.1.20) will appear with a list of all closed sessions with a start date equal to the value just entered.
Show all closed sessions with a certain closing date	- Click <i>Show Closed Sessions With Closingdate</i> - Enter the desired closing date in the message box (dd-mm-yyyy format) - Click <i>Ok</i>	The closed sessions overview screen (section 5.1.20) will appear with a list of all closed sessions with a closing date equal to the value just entered.

Possible errors

Error message	Cause
<i>Value is not a date</i>	The value you entered in the messagebox is not a date in the dd-mm-yyyy format.

Related screens

Reference topic	Section
Closed sessions overview screen	5.1.20

5.1.20 Closed sessions overview screen

Functional description

This screen shows an overview of closed sessions matching certain criteria (see section 5.1.19). On the left is a treeview of all matching sessions and their samples. On the right is a box with information on the selected session.

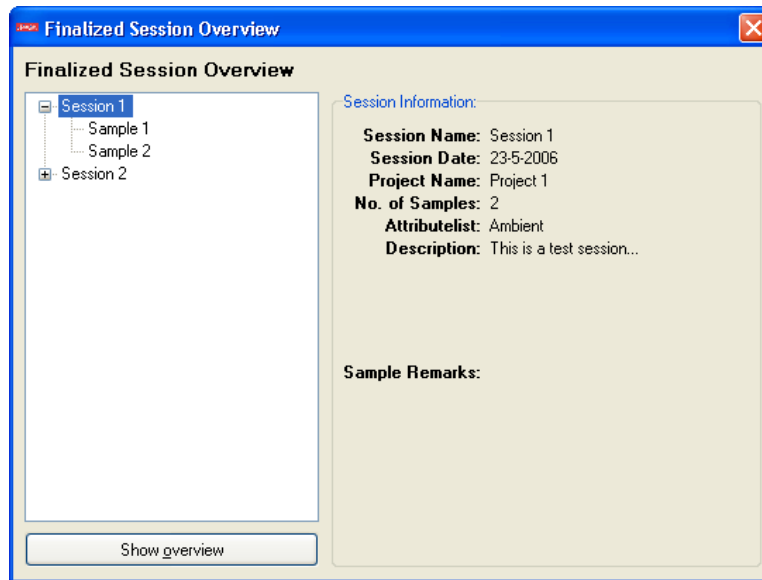


Figure 5.20: Closed sessions overview screen

Cautions and warnings

None

Operations

Operation	Steps	Result
Show session's samples	- Click the plus-sign in front of the desired session	The tree will expand and show the names of the samples for this session.
Hide session's samples	- Click on the minus-sign in front of the desired session	The tree will collapse and hide the names of the samples for this session.
Show session info	- Click on the name of the session you would like to see info for, or, if it is expanded, click on one of its samples	The session information on the right will be updated and display information for the selected session.
Open sample overview screen for a session	- Double click on the name of the session you would like to see info for, or, if it is expanded, double click on one of its samples - Or click the session you would like to see info for and click <i>Show overview</i>	The sample overview screen (section 5.1.10) will appear, containing the samples for that session. You can only change the physical attribute scores there (i.e. not the scores for normal attributes).

Possible errors

None

Related screens Reference topic	Section
Database operations screen	5.1.19
Sample overview screen	5.1.10

5.1.21 Autosave

The autosave function is not a separate screen in ICEPS. It is a background function that constantly monitors the data the user enters in all screens. When ICEPS should crash, for whatever reason, and entered data has not yet been committed to the database, this function still has all the data from before the crash.

Whenever you start ICEPS after a crash, upon logging in, a messagebox will appear asking if you want you load the autosave. If you want to continue with the data you entered before the crash, click yes in this dialog. If you click *No*, all data that was not committed to the database before the crash will be lost (this includes open sample evaluations).

5.2 Administrator reference

This section serves as a reference for administrator users of the ICEPS system. Every screen in the system is documented here, along with all possible operations in the screen, examples of usage, possible errors and references to related screens.

5.2.1 Login screen

See section 5.1.1.

5.2.2 ICEPS main administration screen

Functional description

This is the main administration screen of the ICEPS system. It mainly serves two purposes: firstly, to display all active screens the user has opened. Secondly, to act as an interface from which the user can open various screens that provide the main administrative functionality of ICEPS.

The top of the screen consists of a menu bar (displaying file, options, window etc.) and a toolbar with graphical buttons. All relevant screens can be opened from the menu. The toolbar acts as a shortcut for the menu and contains buttons for most screens in ICEPS.

The center of the screen is called the "workspace" and will contain all open screens.

The bottom of the screen consists of a statusbar that will display short help messages for every toolbar button.

Cautions and warnings

All screens that open up within the ICEPS main administration screen can be closed without closing ICEPS. If you close the ICEPS main administration screen, however, ICEPS will be closed too.

Operations

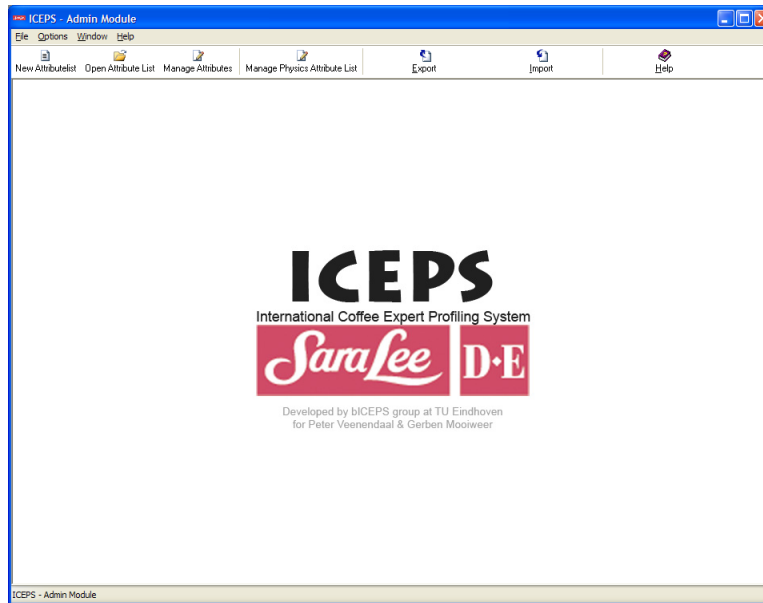


Figure 5.21: ICEPS main administration screen

Operation	Steps	Result
Open the new protected attribute list screen	- Click on the toolbarbutton labeled <i>New Attribute list</i> or select <i>File->New Attribute list</i> from the menu	The protected attribute list screen will appear (section 5.2.4).
Open the open protected attribute list screen	- Click on the toolbarbutton labeled <i>Open Attribute list</i> or select <i>File->Open Attribute list</i> from the menu	The open protected attribute list screen will appear (section 5.2.5).
Open the manage protected attributes screen	- Click on the toolbarbutton labeled <i>Manage Attributes</i> or select <i>File->Manage Attributes</i> from the menu	The manage protected attributes screen will appear (section 5.2.6).
Open the manage physics attribute list screen	- Click on the toolbarbutton labeled <i>Manage Physics Attribute list</i> or select <i>File->Manage Physics Attribute list</i> from the menu	The manage physics attribute list screen will appear (section 5.2.7).
Export protected attributes and protected attribute lists	- Click on the toolbarbutton labeled <i>Export</i> and click on <i>Attributes & Lists</i> or select <i>Options-> Export->Export Protected Attributes & Lists</i> from the menu - Now a standard Windows save file dialog will appear. Browse for the location where you want to save the file and enter a filename in the <i>Filename</i> field, then click <i>Save</i>	A file with protected attributes and protected attribute lists will be created. This file can be imported in the ICEPS main screen (section 5.1.3).
Export physical attribute list	- Click on the toolbarbutton labeled <i>Export</i> and click on <i>Physics</i> or select <i>Options-> Export->Export List Of Physical Attributes</i> from the menu	A file with protected attributes and protected attribute lists will be created. This file can be imported in the ICEPS main screen (section 5.1.3).
56	- Now a standard Windows save file dialog will appear. Browse for the location where you want to save the file and enter a filename in the <i>Filename</i> field, then click <i>Save</i>	REFERENCES
Open export	- Click on the toolbarbutton labeled <i>Export</i>	The export log will appear. This log

Cascade open screens	- Select <i>Window->Cascade</i> from the menu	The open screens will be cascaded.
Close all open screens	- Select <i>Window->Close All</i> from the menu	All open windows will be closed.
Bring a certain screen to the foreground	- Select <i>Window</i> from the menu - Now click on the name of the screen you want on the foreground	The selected screen is brought to the foreground.

Possible errors

None

Related screens

Reference topic	Section
Change password screen	5.1.4
Protected attribute list screen	5.2.4
Open protected attribute list screen	5.2.5
Manage protected attributes screen	5.2.6

5.2.3 Change password screen

See section 5.1.4

5.2.4 Protected attribute list screen**Functional description**

This screen contains all functionality to compose a protected attribute list out of protected attributes. The screen is used for both creating new protected attribute lists as well as for changing existing lists.

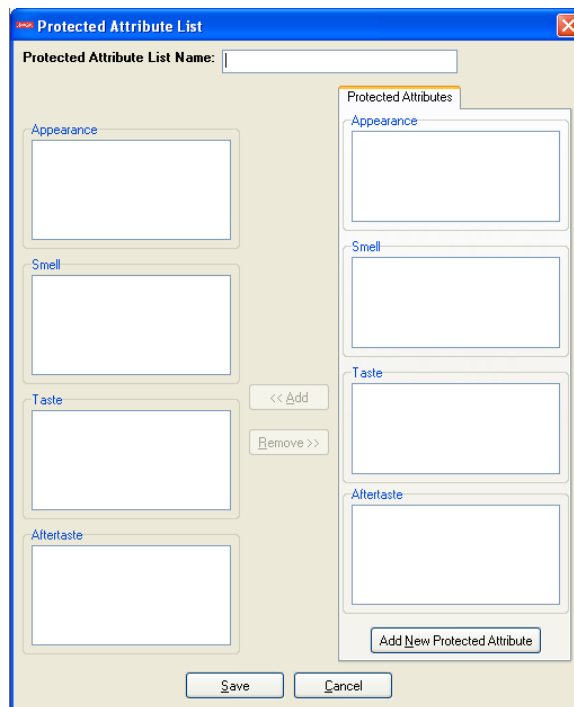


Figure 5.22: Protected attribute list screen

Cautions and warnings

If you are changing an existing attribute list, upon saving, the old list version will be overwritten.

Operations

Operation	Steps	Result
Set attribute list name	- Enter the desired name in the <i>Attribute list Name</i> field	Upon saving this list, the entered value will be used as identifying name for the list.
Add protected attribute(s) to protected attribute list	Alternative 1 - Select one or more (by holding ctrl and clicking) attributes you want to add to the list (you can pick multiple attributes in multiple categories) - Click <i>Add</i> Alternative 2 - Select one or more (by holding ctrl and clicking) attributes you want to add to the list (all attributes must be in the same category) - Click and hold the left mouse button, now drag to the same category on the left side of the screen - Release the left mouse button when inside the category list on the left	The selected attributes will have moved from the lists on the right to the lists on the left. Upon saving this protected attribute list, all attributes in the lists on the left will be in the protected attribute list.
Remove attribute(s) from protected attribute list	- Select one or more (by holding ctrl and clicking) attributes in the categories on the left - Click <i>Remove</i>	The selected attributes will have moved from the lists on the left to the lists on the right. Upon saving this protected attribute list, all attributes in the lists on the left will be in the protected attribute list.
Open add new protected attribute screen	- Click <i>Add New Custom Attribute</i>	The add new protected attribute screen (section 5.2.8) will appear.
Save protected attribute list	- Click <i>Save List</i>	The protected attribute list screen closes and the protected attribute list is saved.
Cancel changes/creation	- Click <i>Cancel</i> or close the screen by clicking the cross in the right upper corner	A messagebox will ask for confirmation. Upon confirmation the protected attribute list screen will close and all changes will be discarded, if you were in the process of creating a new attribute list, no list is created.

Possible errors

Error message	Cause
<i>Please enter a name for the list</i>	You did not enter a name for the attribute list in the <i>Attribute list Name</i> field.
<i>List cannot be empty</i>	You did not add any attributes to the attribute list.

Related screens

Reference topic	Section
Add new protected attribute list screen	5.2.8

5.2.5 Open protected attribute list screen

Functional description

This screen contains the functionality to open or delete a protected attribute list. It consists of a list of available protected attribute lists and two buttons to open or delete a list.

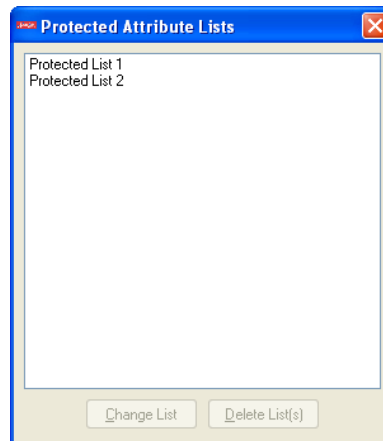


Figure 5.23: Open protected attribute list screen

Cautions and warnings

Once you delete a protected attribute list, there is no way to recover it.

Operations

Operation	Steps	Result
Open protected attribute list	<ul style="list-style-type: none"> - Select the desired protected attribute list in the listbox - Click <i>Change List</i> 	The protected attribute list screen (section 5.2.4) will appear.
Delete protected attribute list	<ul style="list-style-type: none"> - Select the desired protected attribute list in the listbox - Click <i>Delete List</i> 	A messagebox asking for confirmation will appear. Upon confirmation the selected attribute list will be deleted.

Possible errors

None

Related screens

Reference topic	Section
Protected attribute list screen	5.2.4

5.2.6 Manage protected attributes screen

Functional description

This screen contains all the functionality to maintain your protected attributes. These protected attributes can be used to form protected attribute lists.

Protected attributes can be added or deleted in this screen. Deleting an attribute will make it unavailable for use in newly created attribute lists. It will, however, stay available for existing protected attribute lists.

Cautions and warnings

Once you delete a protected attribute, there is no way to recover it.

A deleted attribute that is still in a protected attribute list, and then is removed from that attribute list, cannot be added again because it is deleted.



Figure 5.24: Manage protected attributes screen

Operations

Operation	Steps	Result
Open add new protected attribute screen	- Click <i>Add Attribute</i>	The add new protected attribute screen (section 5.2.8) will appear.
Delete attribute	- Select one or more (by holding ctrl and clicking) attributes you wish to delete - Click <i>Delete Attribute(s)</i>	A message box will appear, asking for confirmation. Upon confirmation, the selected attributes will be deleted and removed from the category lists.

Possible errors

None

Related screens

Reference topic	Section
Add new protected attribute screen	5.2.8

5.2.7 Manage physics attribute list screen**Functional description**

This screen contains all functionality to manage the list of physical attributes on which a sample should be evaluated. It contains a list of physical attributes and two buttons to add and delete attributes.

Cautions and warnings

Once you delete a physical attribute there is no way to recover it.

Operations



Figure 5.25: Manage physics attribute list screen

Operation	Steps	Result
Add attribute	<ul style="list-style-type: none"> - Click <i>Add Attributes</i> - Enter a name for the attribute in the message box - Click <i>Ok</i> 	The entered name is added to the list of physical attributes and is added to the list in the screen.
Delete attribute	<ul style="list-style-type: none"> - Select the desired attribute - Click <i>Delete Attribute</i> 	A message box asking for confirmation will appear. Upon confirmation, the selected attribute will be deleted and remove from the list in the screen.

Possible errors	Cause
Error message <i>There already exists a physics attribute with the same name</i>	You entered an attribute name in the field in the message-box that already exists list of physical attributes.

Related screens

None

5.2.8 Add new protected attribute screen

Functional description

This screen offers the functionality to give a name and category for a new protected attribute. This screen can only be brought up from the manage protected attributes screen (5.2.6).

Operations



Figure 5.26: Add new protected attribute screen

Operation	Steps	Result
Set attribute category	- Select the desired category from the <i>Category</i> dropdownlist	Upon the "Add attribute" operation, the selected category will be used as category for the new attribute.
Set attribute name	- Enter the desired name in the <i>Attribute Name</i> field	Upon the "Add attribute" operation, the entered name will be used as the name for the new attribute.
Add attribute	- Set the <i>Category</i> and <i>Attribute Name</i> fields - Click <i>Ok</i>	The add new protected attribute screen will close and the new attribute is added to the list of its category.

Possible errors

Error message	Cause
<i>There already exist an attribute with the same name and category</i>	You entered an attribute name in the <i>Attribute Name</i> field that already exists in the category selected in the <i>Category</i> dropdownlist.

Related screens

Reference topic	Section
Manage protected attributes screen	5.2.6

Appendix A

Glossary

Term	Meaning
User	Any user of the ICEPS system
End-User	The normal users of the ICEPS system, usually they will be Sara Lee/DE coffee experts
Administrator	The administrator users of the ICEPS system
Sample	A coffee sample
Session	A group of samples, grouped together because they belong to the same project, are evaluated shortly after one another and are evaluated with the same attribute list
Attribute	A property of a coffee sample, belonging to a category
Category	This can be: appearance, smell, taste or aftertaste
Attribute list	A list of attributes on which a sample can be evaluated
Attribute score	The value assigned by an end-user to an attribute
Physical attribute	A property of a coffee sample, specifically dealing with physical properties like viscosity or temperature
Microsoft Excel	A spreadsheet software package by Microsoft

Index

- attribute
 - custom, 18
 - add, 45
 - create, 46
 - disable, 45
 - manage, 31
 - evaluate, 10–11
 - physics, 26
 - manage, 56, 60
 - protected, 22–23
 - add, 59
 - create, 61
 - delete, 59
 - manage, 56
- attribute list
 - custom, 19, 20
 - create, 31, 42
 - disable, 44
 - edit, 42
 - open, 31, 44
 - protected, 24, 25
 - create, 56, 57
 - delete, 59
 - edit, 57
 - open, 56, 59
- autosave, 55
- database, 31, 53
- export
 - data, 27, 56
 - log, 35, 56
 - microsoft excel, 13, 35
- graph, 13, 31, 50, 51
- import, 17, 32
- installation, 3
- log, 35
- login, 7, 21, 28
- main screen, 30
 - administrator, 55
- password
 - change, 8, 32, 33, 56
- pca mapping, 15, 31, 46, 47
- register, 6, 29
- sample, 37
 - evaluation, 38
 - overview, 11, 40
- session, 37
 - close, 13, 34
 - closed
 - overview, 16, 17, 54
 - create, 9–10, 31, 36
 - delete, 13, 34
 - export, 13, 34
 - open, 13, 31, 34
 - sample overview, 40
- uninstallation, 5
- visualization
 - graph, 13, 31, 50, 51
 - pca mapping, 15, 31, 46, 47